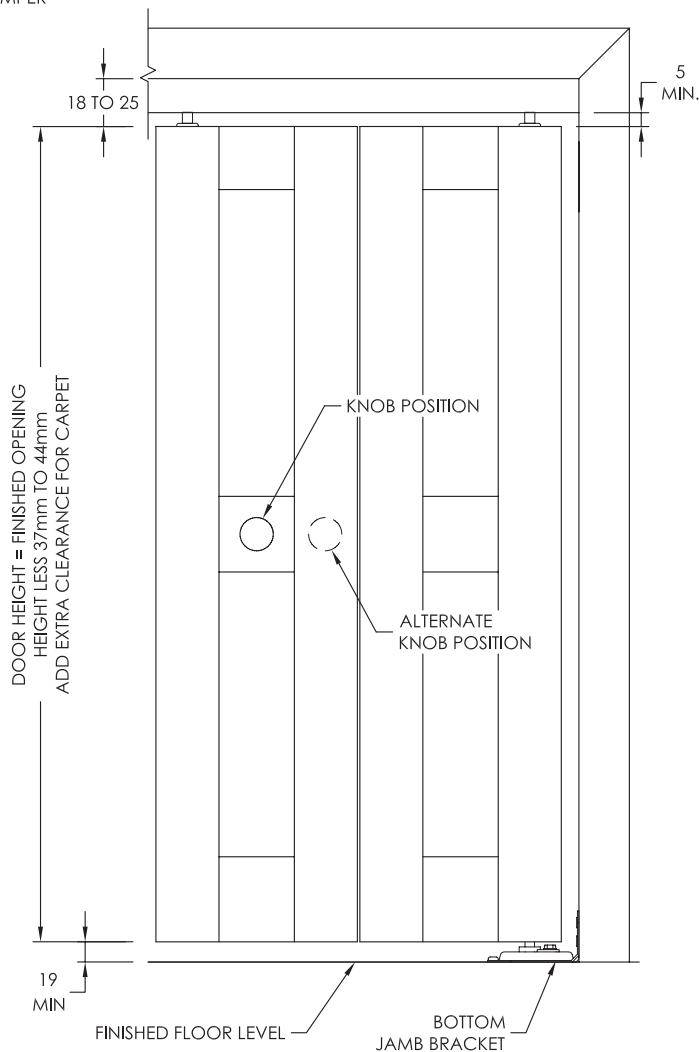
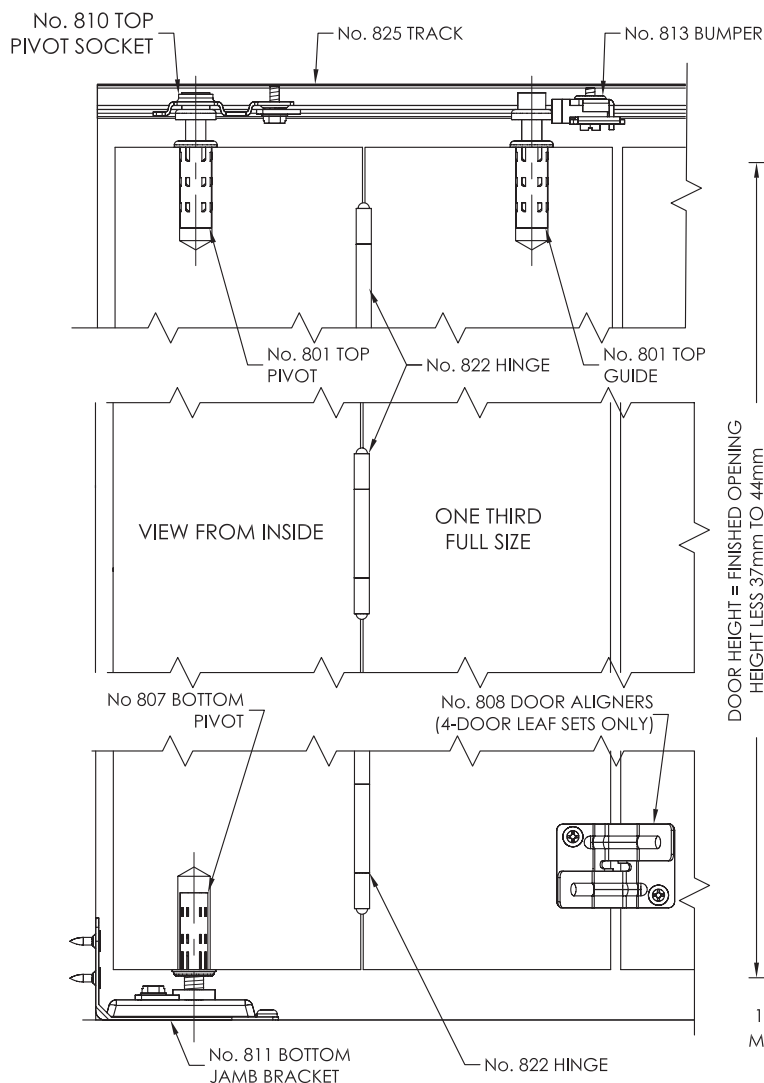


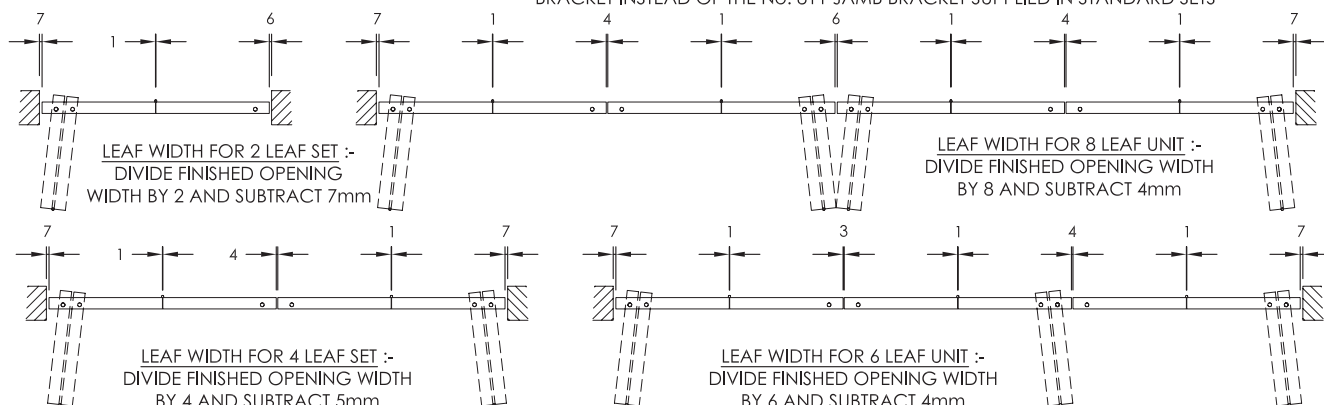
MAXIMUM WEIGHT PER LEAF: 16kg
 MAXIMUM WIDTH PER LEAF: 620mm
 MAXIMUM HEIGHT (THICKNESS): 2400mm (29-35mm)
 2040mm (19-35mm)

NOTE:
 IF DOORS OF 19-26mm ARE USED, THEY MUST
 BE OF SOLID CONSTRUCTION AND SHOULD BE
 RESTRICTED TO 450mm WIDE PER LEAF.

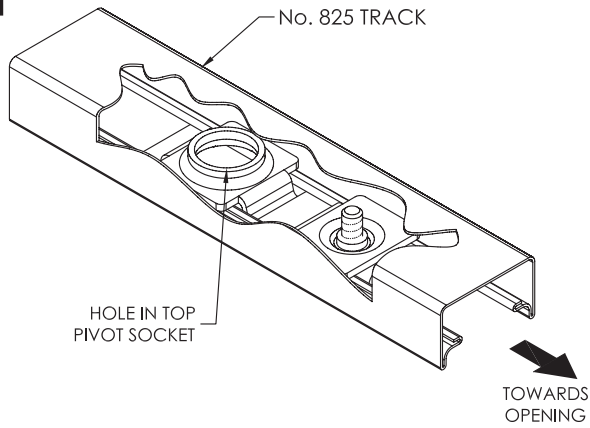
SET NUMBER	OPENING WIDTH	NUMBER OF DOORS
B32	UP TO 915mm	2
B42	UP TO 1250mm	2
B64	UP TO 1830mm	4
B84	UP TO 2500mm	4



THE 6 AND 8 LEAF UNITS SHOWN BELOW REQUIRE THE OPTIONAL No. 804 FLOOR BRACKET INSTEAD OF THE No. 811 JAMB BRACKET SUPPLIED IN STANDARD SETS

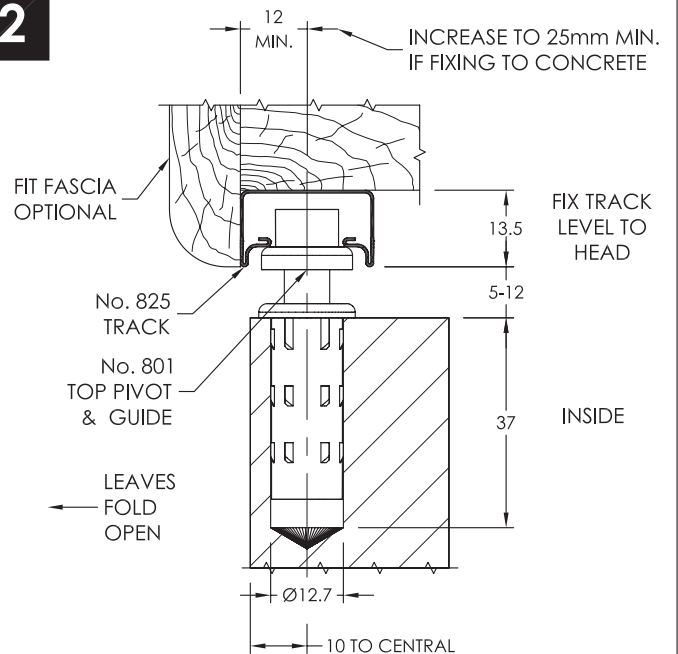


1



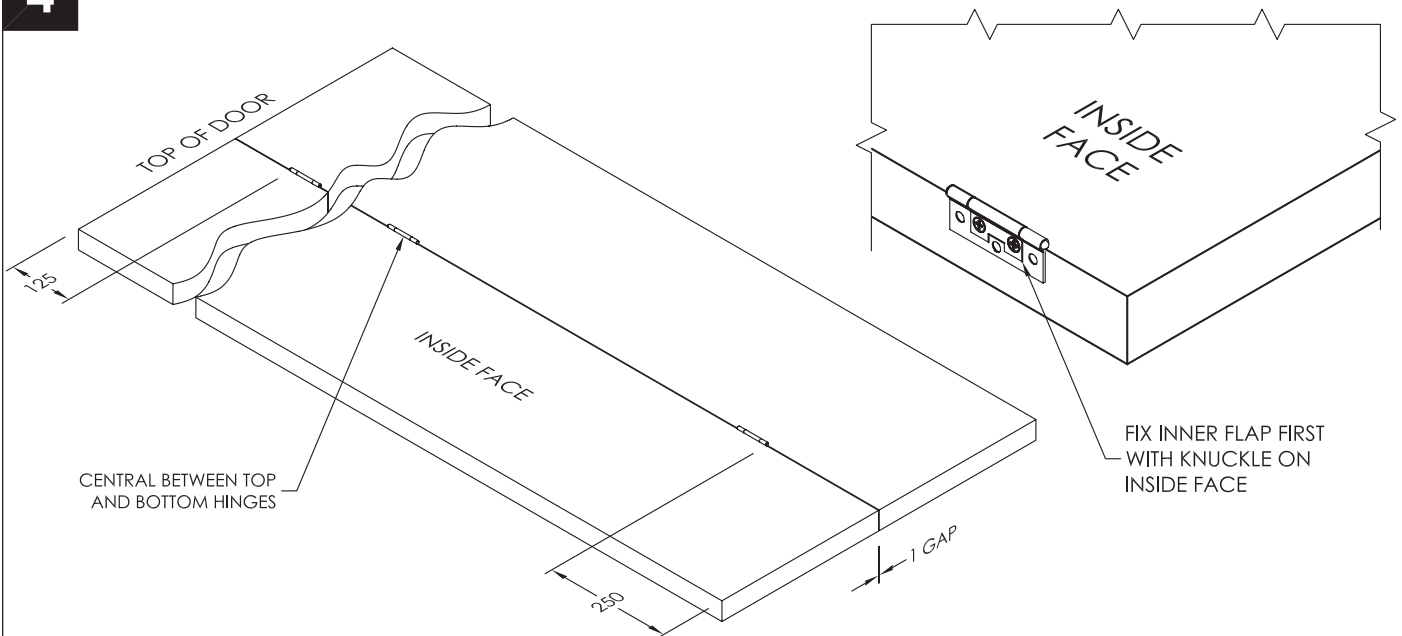
IF NECESSARY, CUT THE TRACK TO SUIT THE OPENING WIDTH. CUT THE TRACK AT THE BUMPER END BUT LOOSEN THE BUMPER AND RETIGHTEN AWAY FROM END TO BE CUT. IF TWO LENGTHS OF TRACK - CUT TO ABUT AT CENTRE OF OPENING FOR 4 DOOR OR 6 DOOR UNITS. FOR 6 DOOR UNITS, CUT THE TRACK TO ENSURE THAT THE GUIDES DO NOT PASS OVER A JOINT.

2

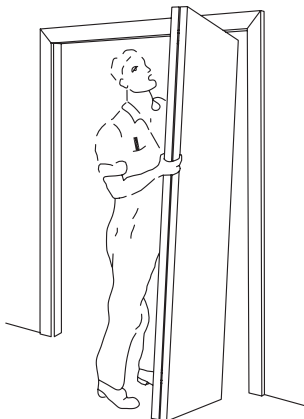


4

FIX HINGES IN POSITIONS SHOWN USING THE BRASS PLATED WOOD SCREWS SUPPLIED



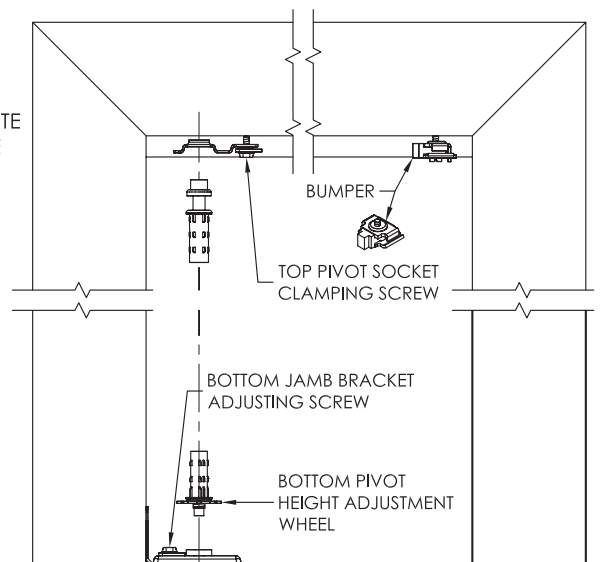
6

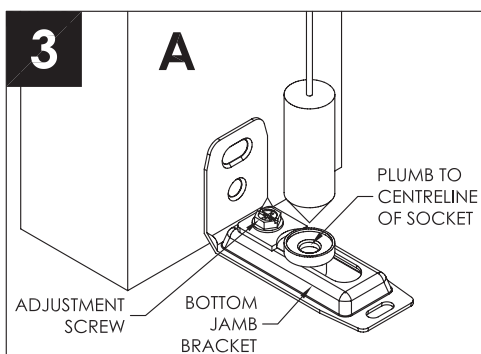


HOLD DOORS TOGETHER ACROSS OPENING AS SHOWN. Insert Top Pivot into hole in Track Pivot Socket and Guide into groove of track. Set bottom pivot into Jamb Bracket Socket. To minimise gap at top, lift doors to relieve pressure and turn adjusting nut on Bottom Pivot. Close attention should be paid to the 7mm gap between doors and side jamb. If adjustment is required, loosen Pivot Socket in Track or reposition Bottom Pivot Socket in Jamb Bracket.

7

★
SEE
OPPOSITE
PAGE





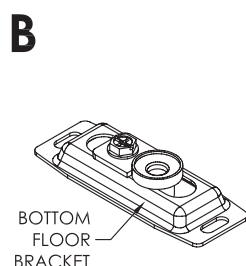
PLUMB CENTRELINE OF SOCKET IN BOTTOM BRACKET FROM CENTRE OF HOLE IN TOP PIVOT SOCKET AND POSITION FOR RELEVANT APPLICATION (SET ABOVE AND BELOW). ALWAYS FIX SCREW IN CENTRE OF ONE SLOTTED HOLE FIRST, TO ALLOW LATERAL ADJUSTMENT BEFORE FIXING THE REMAINING SCREW(S).

A SIDE JAMB FIXING

FIX WITH 8g. x 32 CSK. WOOD SCREWS AND 8g. x 16 PAN HEAD SCREW. (MAY BE APPLICABLE TO ALL APPLICATIONS)

B SIDE FLOOR MOUNTING ALTERNATIVE TO A. ORDER

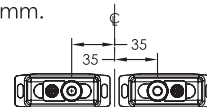
OPTIONAL FLOOR BRACKET NOT INCLUDED IN SETS. (MAY BE APPLICABLE TO ALL APPLICATIONS)



C FOR 6 DOOR UNIT. FACE OF JAMB TO CENTRE OF HOLE IN SOCKET IN FLOOR BRACKET - FOUR TIMES DOOR WIDTH LESS 22mm



D FOR 8 DOOR UNIT. CENTRELINE OF OPENING TO CENTRE OF HOLE IN SOCKET IN FLOOR BRACKET IS 35mm.

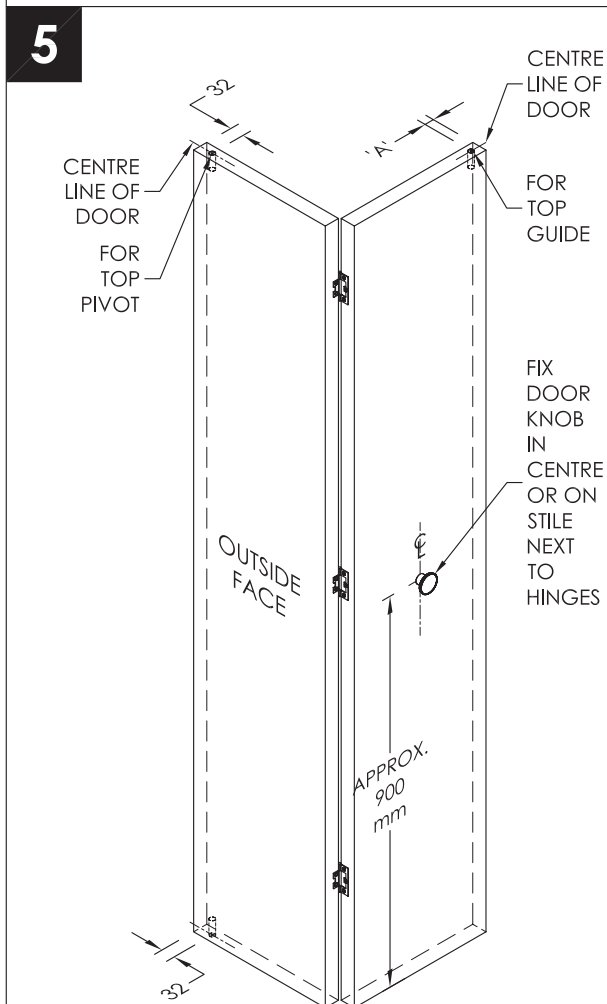


C ONE FLOOR BRACKET

FOR 6 DOOR UNIT - NOT INCLUDED IN SETS, ORDER SEPARATELY.

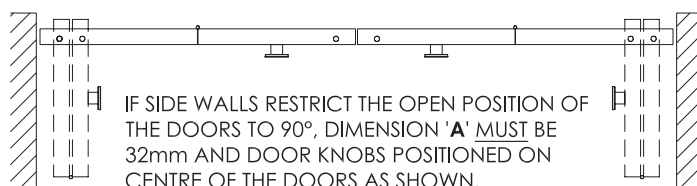
D TWO FLOOR BRACKETS

FOR 8 DOOR UNIT - NOT INCLUDED IN SETS, ORDER SEPARATELY.



TO ALLOW EASIER ACCESS TO CUPBOARDS, IT IS RECOMMENDED THAT DOORS OPEN BEYOND 90° IF THERE ARE NO SIDE WALL RESTRICTIONS. DIMENSION 'A' THEREFORE VARIES ACCORDING TO DOOR THICKNESS.

DOOR THICKNESS	DIMENSION 'A'
35mm	22mm
30mm	24mm
25mm	26mm
20mm	28mm



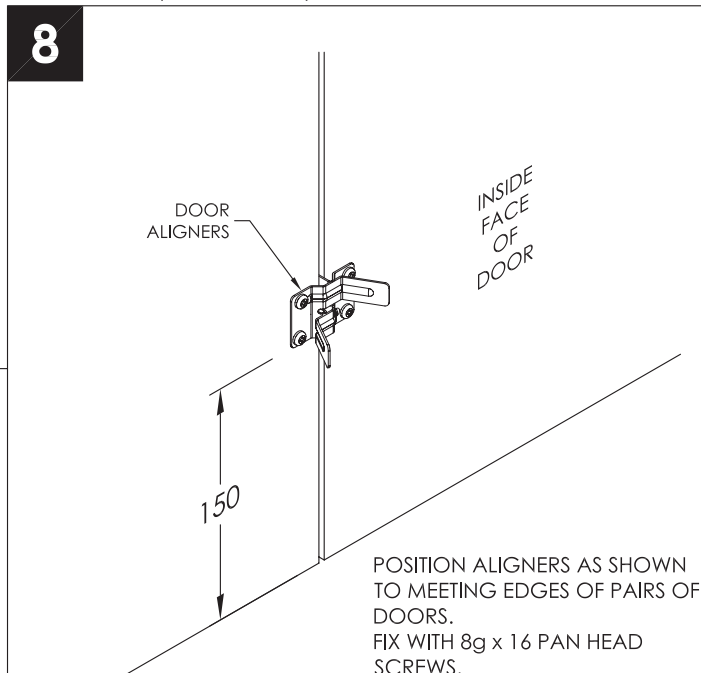
DRILL HOLES FOR PIVOTS AND GUIDE WITH Ø12.7 [1/2"] DRILL BIT x 37mm DEEP TO DIMENSIONS SHOWN.

HOLES TO BE DRILLED IN CENTRE LINE OF DOOR OR 10mm FROM OUTSIDE FACE.

FITTINGS MUST BE A SNUG FIT IN Ø12.7 HOLE FOR CORRECT FUNCTIONING OF DOOR TRACK.

DRIVE COMPONENTS IN CORRECT HOLES USING A BLOCK OF WOOD BETWEEN NYLON BODY AND HAMMER.

FIX DOOR KNOB (NOT SUPPLIED) IN POSITION SHOWN.



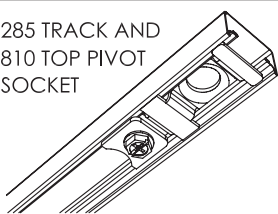
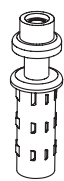
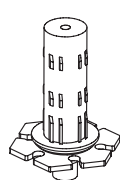
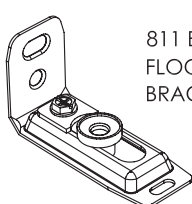
DOORS MAY BE ADJUSTED IN OPEN OR CLOSED POSITION. SLACKEN TOP PIVOT SCREW AND BOTTOM JAMB BRACKET ADJUSTING SCREW AND ALIGN DOORS VERTICALLY WITH 7mm JAMB GAP - RETIGHTEN SCREWS. WHILE SUPPORTING THE WEIGHT OF THE DOOR, ADJUST BOTTOM PIVOT UP OR DOWN AS NECESSARY TO OBTAIN A 5mm GAP BETWEEN THE TOP OF THE DOOR AND THE TRACK.

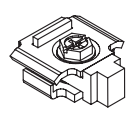
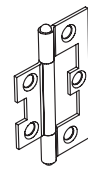
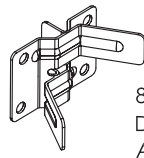
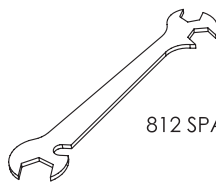
ADJUST BUMPER TO COMPRESS AGAINST THE GUIDE WHEN THE DOORS ARE CLOSED TO KEEP THE DOORS FLAT.

SET NUMBER	OPENING WIDTH	NUMBER OF DOORS
B32	UP TO 915mm	2
B42	UP TO 1250mm	2
B64	UP TO 1830mm	4
B84	UP TO 2500mm	4

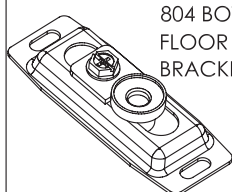
MAXIMUM WEIGHT PER LEAF: 16kg
 MAXIMUM WIDTH PER LEAF: 620mm
 MAXIMUM HEIGHT (THICKNESS): 2400mm (29-35mm)
 2040mm (19-35mm)

NOTE:
 IF DOORS OF 19-26mm ARE USED, THEY MUST
 BE OF SOLID CONSTRUCTION AND SHOULD BE
 RESTRICTED TO 450mm WIDE PER LEAF.

PARTS INCLUDED IN SETS	NUMBER OF PARTS		SCREWS SUPPLIED
	2 DOOR SET	4 DOOR SET	
 <p>285 TRACK AND 810 TOP PIVOT SOCKET</p>	1	2	8g x 32 PAN HEAD
 <p>801 TOP PIVOT AND TOP GUIDE</p>	2	4	-
 <p>807 BOTTOM PIVOT</p>	1	2	-
 <p>811 BOTTOM FLOOR BRACKET</p>	1	2	8g x 32 COUNTERSUNK AND 8g x 16 PAN HEAD

PARTS INCLUDED IN SETS	NUMBER OF PARTS		SCREWS SUPPLIED
	2 DOOR SET	4 DOOR SET	
 <p>813 BUMPER FITTED IN 825 TRACK</p>	1	2	-
 <p>822 HINGE</p>	3	6	5g x 25 COUNTERSUNK WOODSCREW BRASS PLATED
 <p>808 DOOR ALIGNER</p>	-	1 PAIR	8g x 16 PAN HEAD
 <p>812 SPANNER</p>	1	1	-

OPTIONAL EXTRA

 <p>804 BOTTOM FLOOR BRACKET</p>	<p>USE IN PLACE OF 811 BOTTOM JAMB BRACKET WHEN JAMB UNAVAILABLE i.e.. WITH 6 LEAF AND 8 LEAF UNITS, SEE PAGES 1 AND 3.</p>
---	---

IMPORTANT: KEEP THIS FIXING INSTRUCTION AND SPANNER IN CASE THE DOOR NEEDS ADJUSTMENT IN THE FUTURE.