

Application

Suitable for residential wardrobes and folding cupboards.

Ideal for use on openings with non-rebated jambs as only simple framing at the head is required to take the top track.

The pivot arrangement allows the panels to fold open to about 100 degrees, allowing unhindered access to over 90% of the opening.

Bottom guide channel not necessary.

Panel Specification

Guide System:	Bifold 16
For Individual Panels:	
Max Panel Height	2400mm (for panels 29-35mm thick) 2040mm (for panels 19-35mm thick)
Max Panel Weight	16kg
Max Panel Width	620mm
Min Panel Thickness	19mm

Top and bottom rails should be of sufficient size to ensure solid and secure fitting for the guide and pivots. Panels should be made of equal width

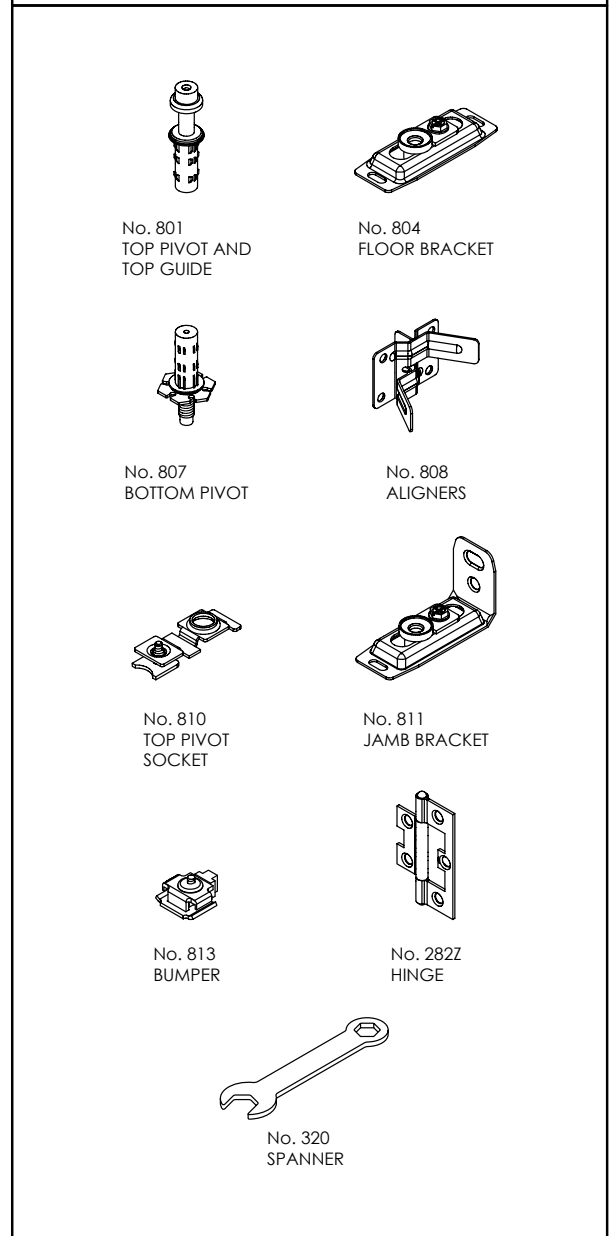
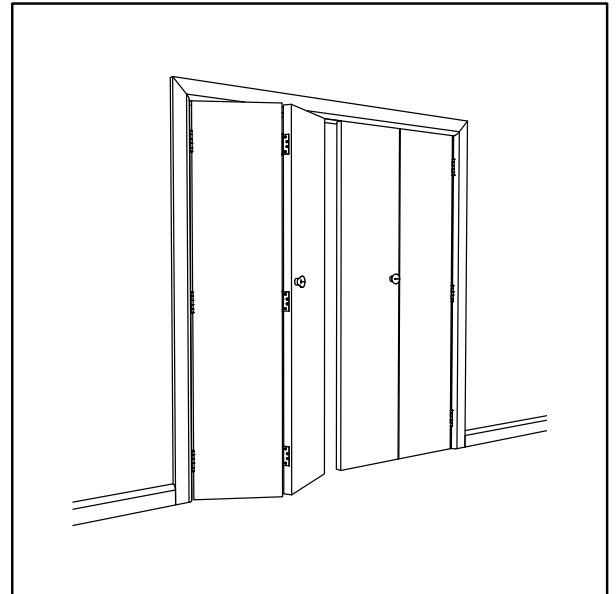
Standard Sets

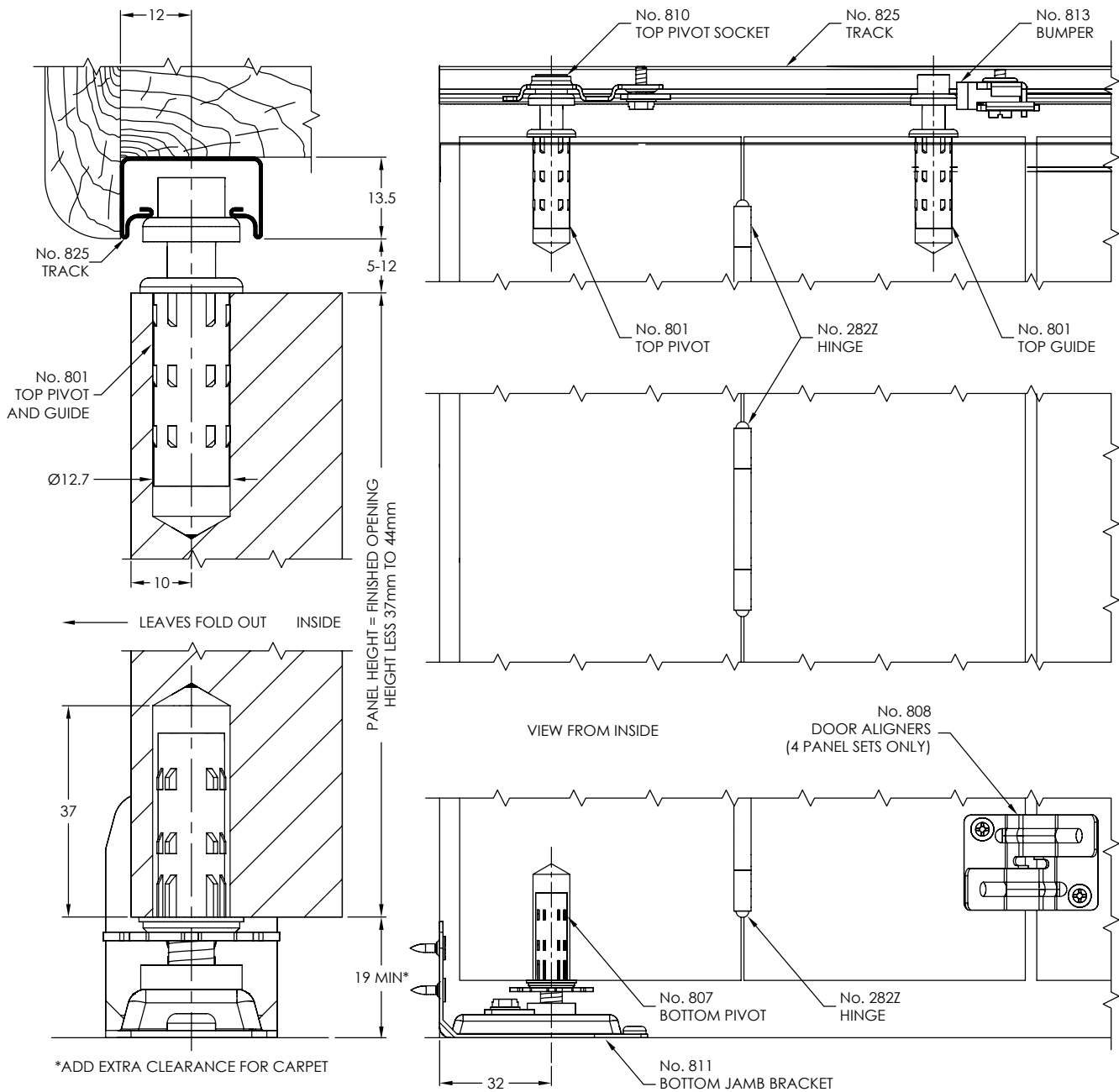
Sets for two panels comprise track, top pivot socket, bumper, top and bottom pivots, jamb bracket, top guide, 282Z hinges, spanner, all screws and fitting instructions. Sets for four panels comprise twice the amount of the above hardware, but only one spanner and fitting instruction plus two aligners.

Set No.	Opening width
BF16-09/2	Up to 915mm for two panels
BF16-12/2	916mm to 1250mm for two panels
BF16-18/4	Up to 1830mm for two panels pivoted from each side
BF16-25/4	1831mm to 2500mm for two panels pivoted from each side

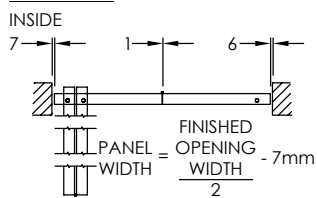
Hardware Specification

Track:	825
Material	Steel in white paint finish
Standard Lengths	820mm, 915mm, 1220mm, 1830mm & 2440mm
Top Pivot Socket:	810
Steel, zinc dichromate	
Bumper:	813
Rubber and steel, zinc dichromate	
Top Pivot & Top Guide:	801
Nylon and steel, zinc dichromate	
Bottom Pivot:	807
Steel, zinc dichromate	
Jamb Pivot:	811
Nylon and steel, zinc dichromate	
Aligner:	808
Steel, zinc dichromate, supplied in 4 panel kits only	
Hinge:	282Z
Zinc plated for 19mm minimum panel thickness, 65mm tall, non-mortice	
Spanner:	320
Steel, zinc dichromate	
Accessories:	
Floor Bracket	804
Use instead of 811 jamb bracket if jamb not available. Nylon and steel, zinc dichromate.	
Hinge:	823
Electro brass for 23mm minimum panel thickness, 75mm tall, non-mortice	

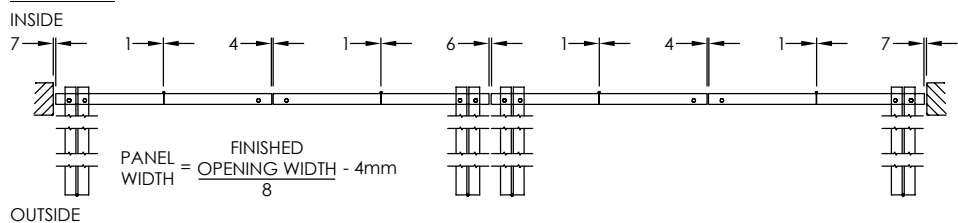




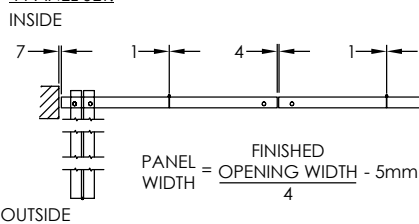
2 PANEL SET:



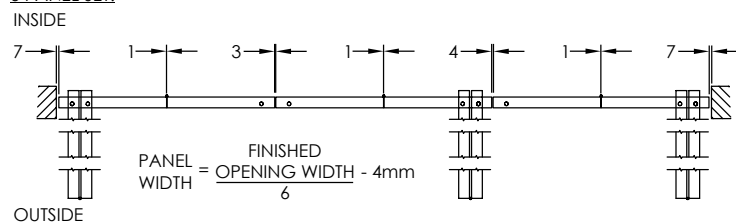
8 PANEL SET:



4 PANEL SET:



6 PANEL SET:



THE 6 AND 8 LEAF UNITS SHOWN BELOW REQUIRE THE OPTIONAL No. 804 FLOOR BRACKET INSTEAD OF THE No. 811 JAMB BRACKET SUPPLIED IN STANDARD SETS