

Application

Suitable for interior, top hung sliding panels.

Ideal for sliding panels and shutters in residential and commercial applications.

Versatile design allows the opening to be covered by any number of panels.

The aluminium track may be fitted directly to the lintel, in single or multiple lines, or face fitted to the lintel using a single line of brackets.

Hangers come standard with a steel bracket and four nylon tyred wheels with precision bearings.

Panel Specification

Track System:	Single Run 60
For Individual Panels:	
Max Panel Weight	60kg
Max Panel Height	2400mm
Min Panel Thickness	19mm

Standard Sets and Packs

Sets comprise of top track, brackets, hangers, door stops, guide, spanner and timber screws.

Set No.	Panel width	Track Length	Qty Brackets
SR60-20/1	610mm to 915mm	2000mm	5
SR60-30/1	915mm to 1525mm	3000mm	8

Pack No.	
SR60-1PK	Fitting pack only, no track and brackets

Hardware Specification

Track:	60
Material	Aluminium, Mill
Standard lengths	2000mm, 3000mm, 4000mm and 6000mm

Brackets:	
Single	91
Pack of 5 brackets	91/5

Bracket 91 made from stainless steel. Supplied with matching fasteners.

Hangers (2 per panel):	606
-------------------------------	-----

Hanger has a nylon body and comes standard with zinc plated steel bracket and four nylon tyred wheels with chrome precision bearings.

Door Stops:	287S
Made from stainless steel, supplied with a rubber buffer and locking screw.	

Guide:	55G
---------------	-----

Guide in white nylon, comes in two parts that fit on both sides of the panel. The guide is floor mounted.

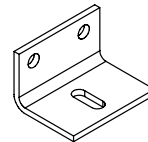
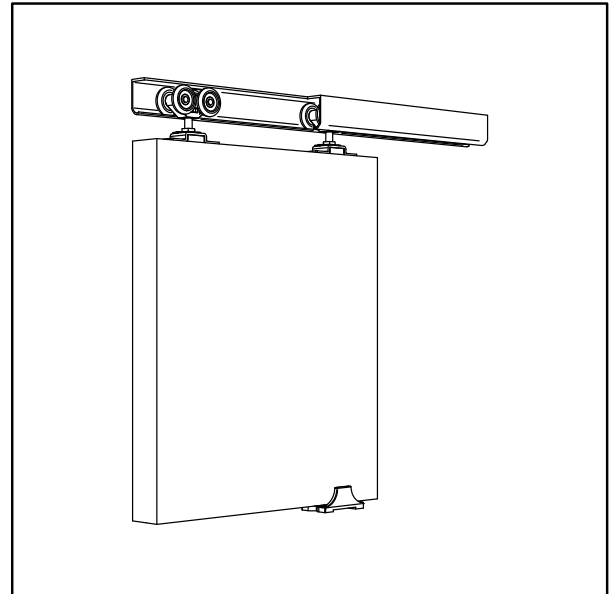
Spanner:	805-SPN to suit 606 Hanger
-----------------	----------------------------

Accessories:	
Alternative Guide	801

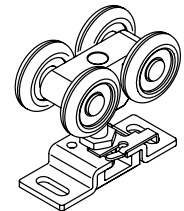
Spring loaded guide, nylon body and tip with zinc plated steel shaft. Designed to slide in the 92 and 130 thresholds.

Alternative Guide	101N
-------------------	------

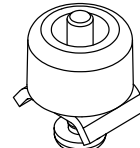
The nylon guide is designed to slide through a 20mm deep by 5mm wide sawcut in the bottom rail of the panel.



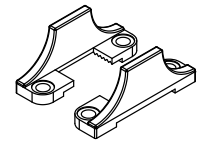
No. 91
BRACKET



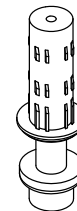
No. 606
HANGER



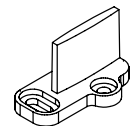
No. 287S
DOOR STOP
(SUPPLIED IN
SETS & PACKS)



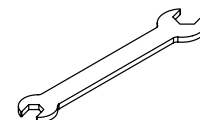
No. 55G
GUIDE
(SUPPLIED IN
SETS & PACKS)



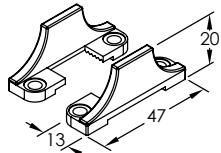
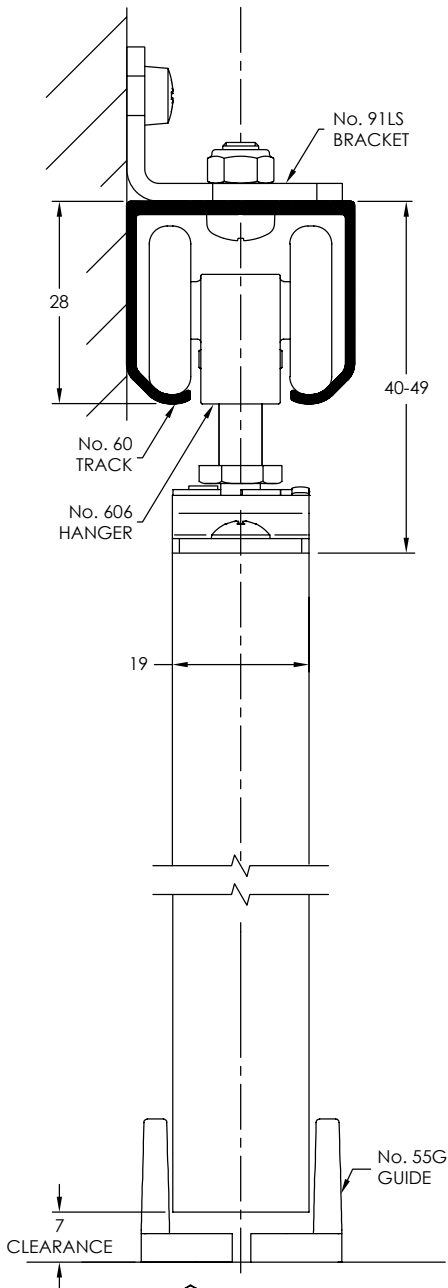
No. 801
GUIDE



No. 101N
GUIDE



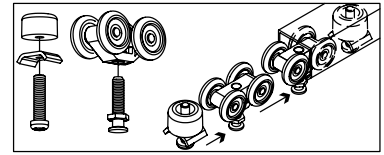
No. 805-SPN
SPANNER



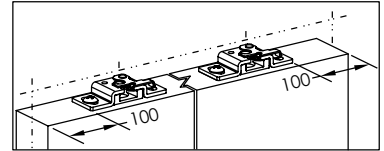
No. 55G GUIDE
INCLUDED IN SETS & FITTING PACKS.
SUITABLE FOR PANELS OF ANY WIDTH

INSTALLATION INSTRUCTIONS

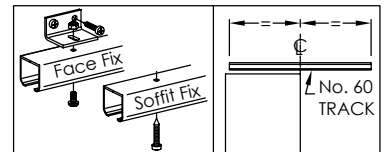
1 Prepare Hardware
Screw hanger bolts into hangers and door stops. Insert hangers into track. Insert a door stop at either end to retain hangers during track installation.



2 Attach Hardware to Panel
Hanger mounting plates should be positioned centrally to panel thickness

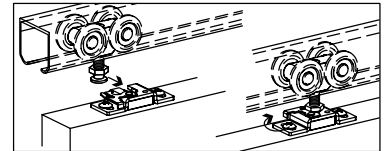


3 Fix Track Parallel to Floor
Soffit Fix: position 8g screws first 50mm in from each end and every 450mm approx centres
Face Fix: use 91 brackets.

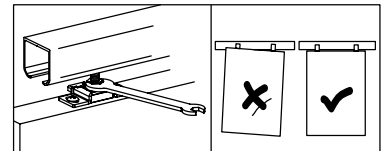


Track Length	2000	3000	4000	6000
Bracket Qty.	5	8	10	15

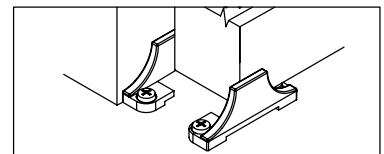
4 Fit Panel
With the latch on the mounting plates open, bring door up to hangers and push hanger bolt into plate. Close latches when bolts are in the plates.



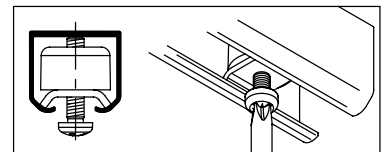
5 Adjust Panel
Screw bolt in or out of hanger to adjust panel height. Adjust height so panel is square.



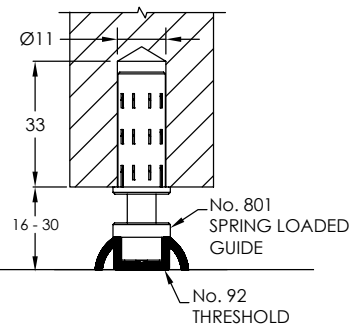
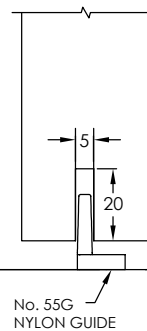
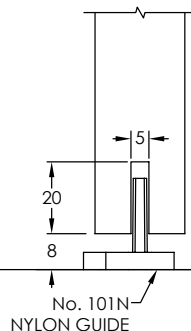
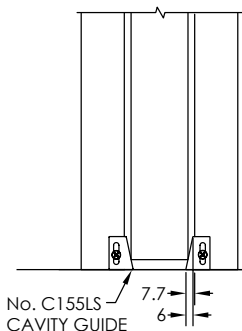
6 Fit Guide
Locate at opening jamb. With panel hanging plumb fix guides to either side of panel.



7 Fit Door Stops
Fit one stop to each end of the Track where required. Loosen screw to move and tighten to fix in position.



ALTERNATIVE GUIDES



Application

Suitable for interior cavity door applications in residential and commercial environments.

Hangers come standard with a steel bracket and four nylon tyred wheels with precision bearings.

Panel Specification

Track System:	Cavity Run 60
For Individual Panels:	
Max Panel Weight	60kg
Max Panel Height	2400mm
Min Panel Thickness	19mm

Standard Sets and Packs

Sets comprise of top track, hangers, guide, spanner and timber screws.

Set No.	Panel width	Track Length
CR60-20/1	610mm to 915mm	2000mm
CR60-30/1	915mm to 1525mm	3000mm

Pack No.	
CR60-1PK	Fitting pack only, no track

Hardware Specification

Track - punched for soft fitting:	60
Material	Aluminium, Mill
Standard lengths	2000mm, 3000mm, 4000mm and 6000mm

Hangers (2 per panel):	605
-------------------------------	-----

Hanger has a nylon body and comes standard with zinc plated steel bracket and four nylon tyred wheels with chrome precision bearings.

Guide:	C155LS
Nylon guide for cavity panel applications.	

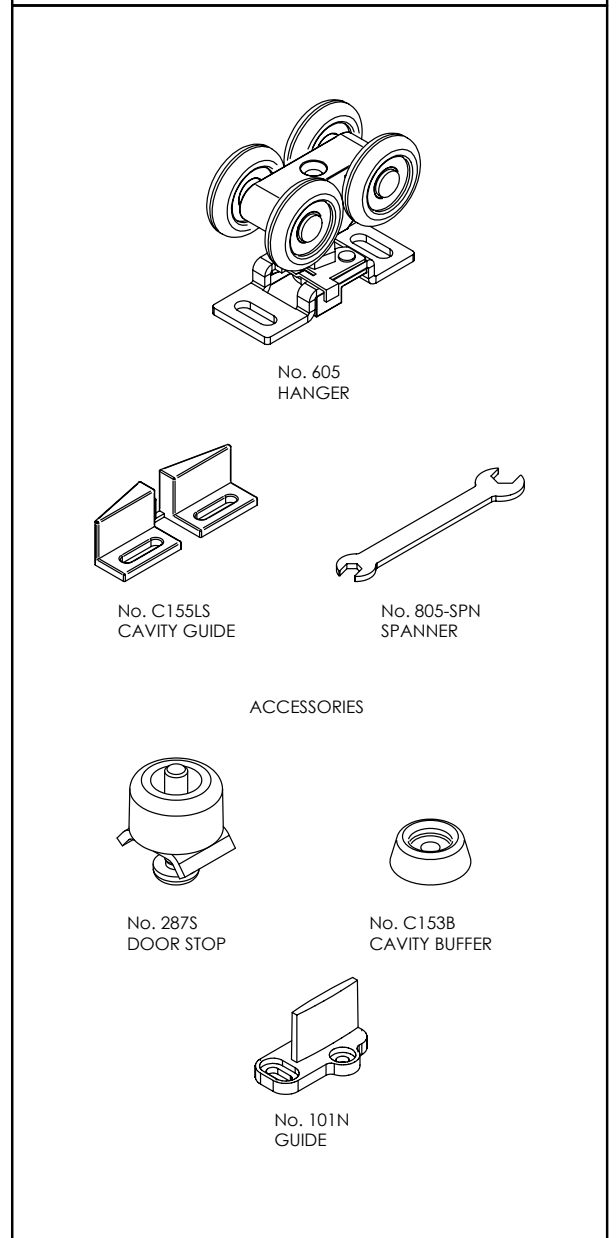
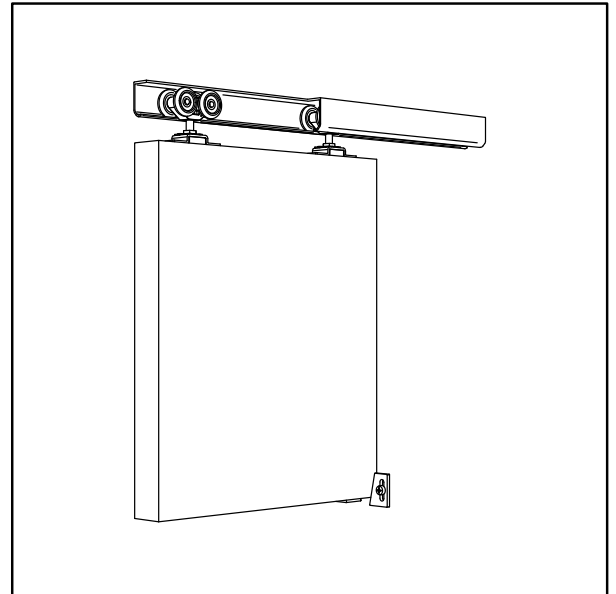
Spanner:	805-SPN to suit 605 Hanger
Pressed steel zinc plated.	

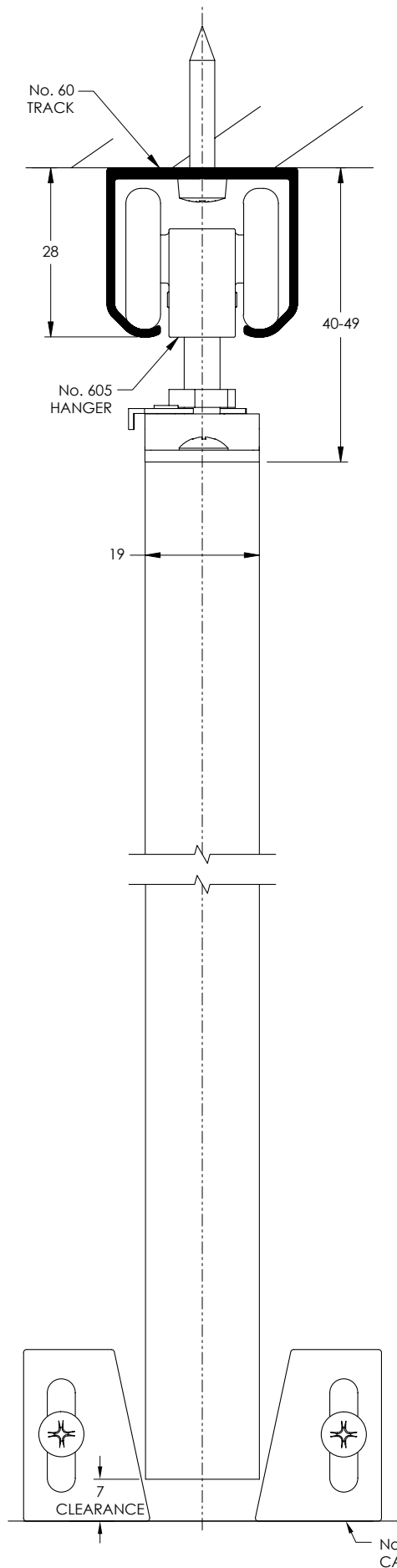
Accessories:	287S
Door Stops:	
Made from stainless steel, supplied with a rubber buffer and locking screw.	

Alternative Guide	101N
-------------------	------

The nylon guide is designed to slide through a 20mm deep by 5mm wide sawcut in the bottom rail of the panel.

Cavity Buffer	C153B
Rubber buffer and fixing screw.	

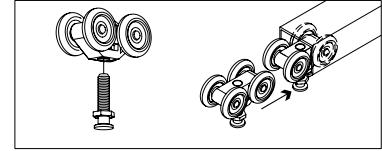




INSTALLATION INSTRUCTIONS

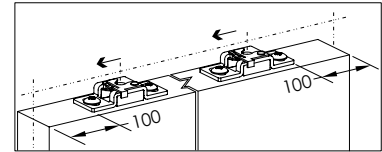
1 Prepare Hardware

Screw hanger bolts into hangers. Insert hangers into track.



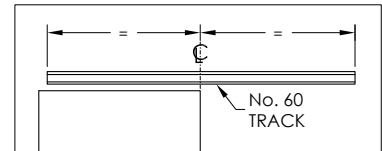
2 Attach Hardware to Panel

Hanger mounting plates should be positioned centrally to panel thickness. Plates should be facing the same direction. Opening facing cavity opening.



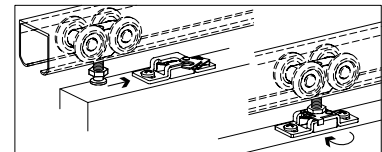
3 Fix Track Parallel to Floor

Position 8g screws first 50mm in from each end and every 300mm between.



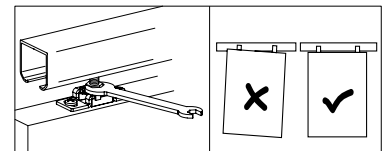
4 Fit Panel

With the latch on the mounting plates open, bring panel up to hangers and push hanger bolt into plate. Close latches when bolts are in the plates.



5 Adjust Panel

Screw bolt in or out of hanger to adjust panel height. Adjust height so panel is square.



6 Fit Guide

Locate at opening jamb. With door hanging plumb fix guides to either side of door.

