

Application

Designed to suit aluminium folding louvred panels, with all panels of equal width. Panels can fold to one or both sides of the opening.

Pivot hardware enables folding exterior screen to be designed using equal width panels with no cutting down of the panel adjacent to post.

All stainless steel hardware components are concealed within the aluminium door stile.

Panel Specification

Track System:	Louvrefold 25
Max Panel Height	2400mm
Max Panel Weight	25kg
Max Panel Width	900mm
Panel Thickness	30mm

Hardware Specification

Track:	100
Material	Aluminium, Clear Anodised
Standard Lengths	2000mm, 3000mm, 4000mm and 6000mm

Bracket (Face Fix):	
Bracket 316 Stainless Steel	1SS/250
Brackets located close together at the pivot end of the track with other brackets at 400mm centres.	

Hanger Sets:	
End Hanger	52EN-A
Intermediate Hanger	52EN/4-A
Stainless Steel hangers are fitted with nylon wheels on precision stainless steel ball race bearings. Vertical adjustment is simple and positive.	

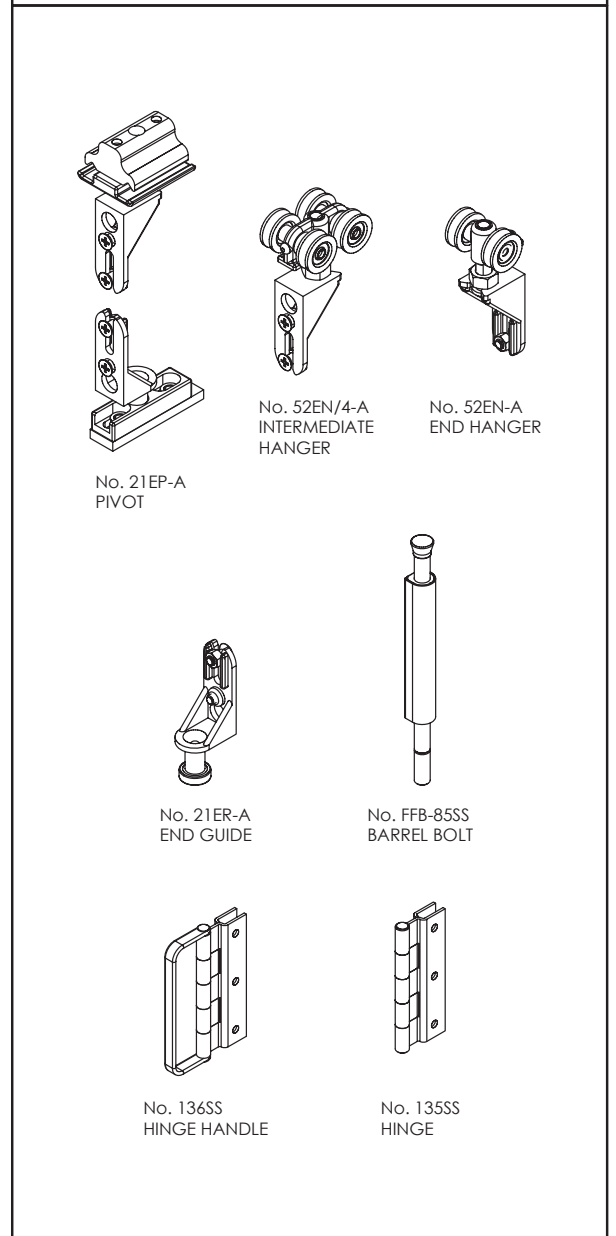
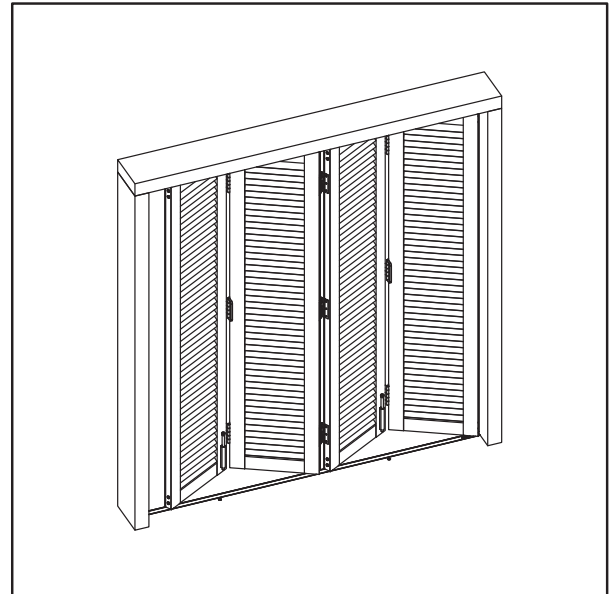
Pivot Sets:	
Adjustable Top & Bottom Pivot	21EP-A

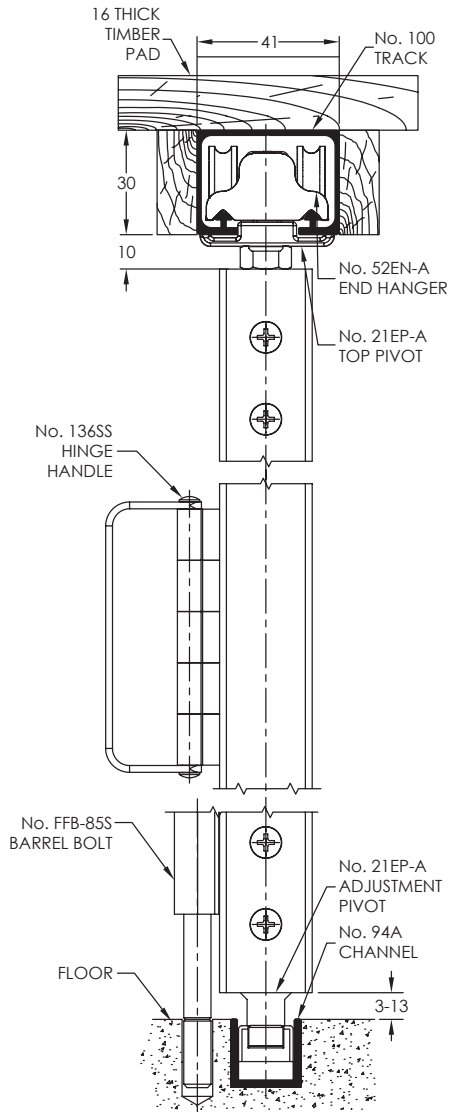
Guide:	
With Precision Stainless Bearing	21ER-A

Hinge Sets:	
Screen Hinge	135SS
Screen Hinge & Handle	136SS
Screen hinges are constructed from 304 Satin Stainless Steel	

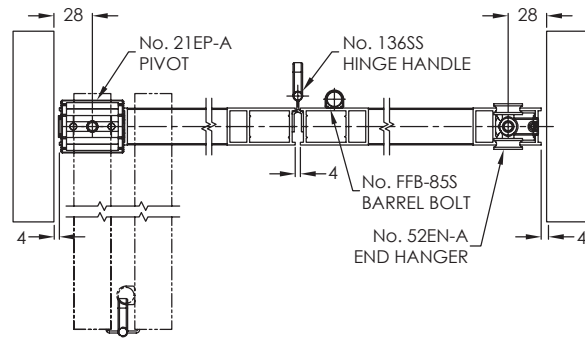
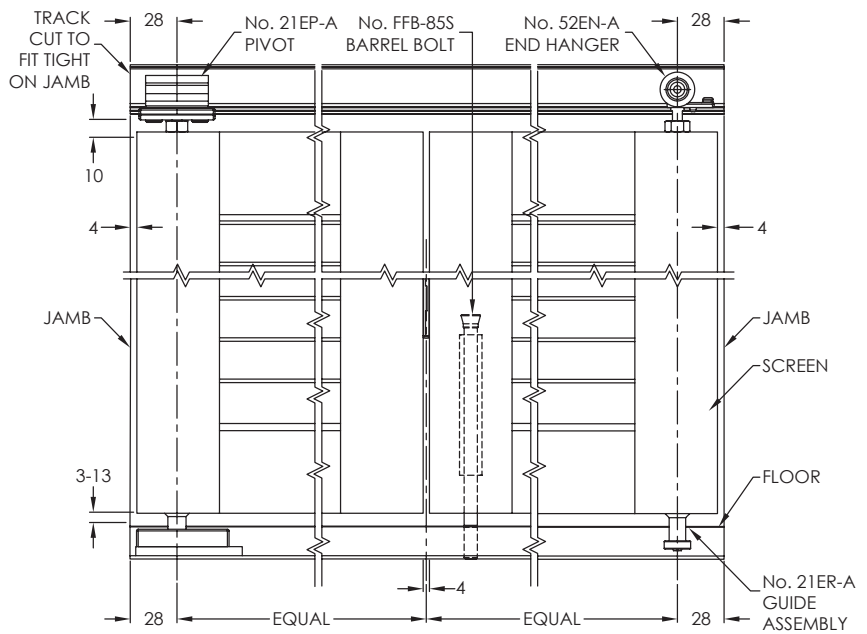
Channels:	
Aluminium	94A
Finish	Aluminium, Mill or Clear Anodised
Standard Lengths	2000mm, 3000mm, 4000mm and 6000mm

Accessories:	
Barrel Bolt (bottom only)	FFB-85SS

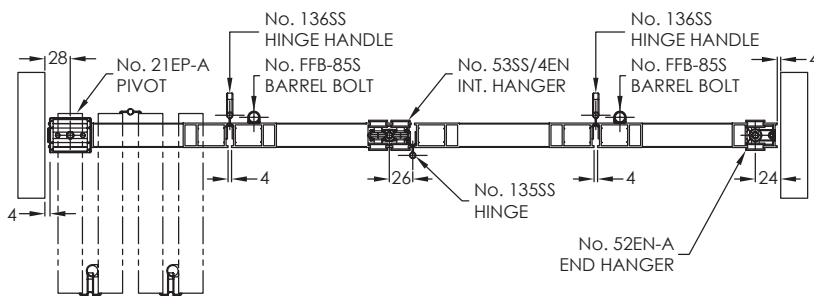




2 OR 2+2 PANEL



4 PANEL



6 PANEL

