

Application

Designed to suit aluminium folding screens, with all panels of equal width. Panels can fold to one or both sides of the opening.

Pivot hardware enables folding exterior screen to be designed using equal width panels with no cutting down of the panel adjacent to post.

All stainless steel hardware components are located inside the aluminium stile's recess for flush and secure fitting.

Panel Specification

Track System:	Screenfold 25
Max Panel Height	2400mm
Max Panel Weight	25kg
Max Panel Width	900mm
Panel Thickness	19mm Security screen panels

Hardware Specification

Track:	100
Material	Aluminium, Clear Anodised
Standard Lengths	2000mm, 3000mm, 4000mm and 6000mm

Bracket (Face Fix):
Bracket 316 Stainless Steel 1SS/250
Brackets located close together at the pivot end of the track with other brackets at 400mm centres.

Hanger Sets:
End Hanger 53SSEN
Intermediate Hanger 53SS/4EN
Stainless Steel hangers are fitted with nylon wheels on precision stainless steel ball race bearings. Vertical adjustment is simple and positive.

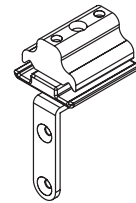
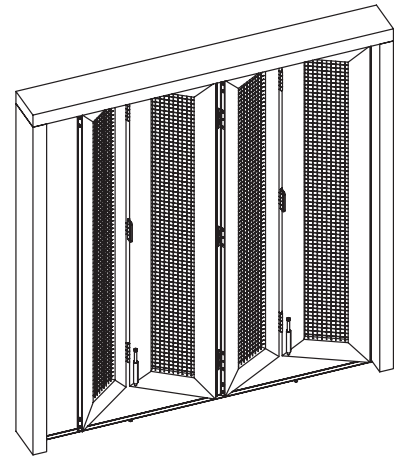
Pivot Sets:
Adjustment Top & Bottom Pivot 21EPB

Guide:
Corner Precision Stainless Bearing 113RB/94

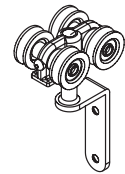
Hinge Sets:
Screen Hinge 135SS
Screen Hinge & Handle 136SS
Screen hinges are constructed from 304 Satin Stainless Steel

Channels:
Aluminium 94A
Finish Aluminium, Mill or Clear Anodised
Standard Lengths 2000mm, 3000mm, 4000mm and 6000mm

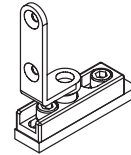
Accessories:
Barrel Bolt (bottom only) FFB-85SS



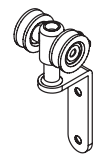
No. 21EPB
PIVOT



No. 53SS/4EN
INTERMEDIATE
HANGER



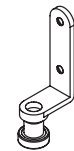
No. 21EPB
PIVOT



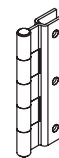
No. 53SSEN
END HANGER



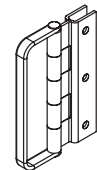
No. FFB-85SS
BARREL BOLT



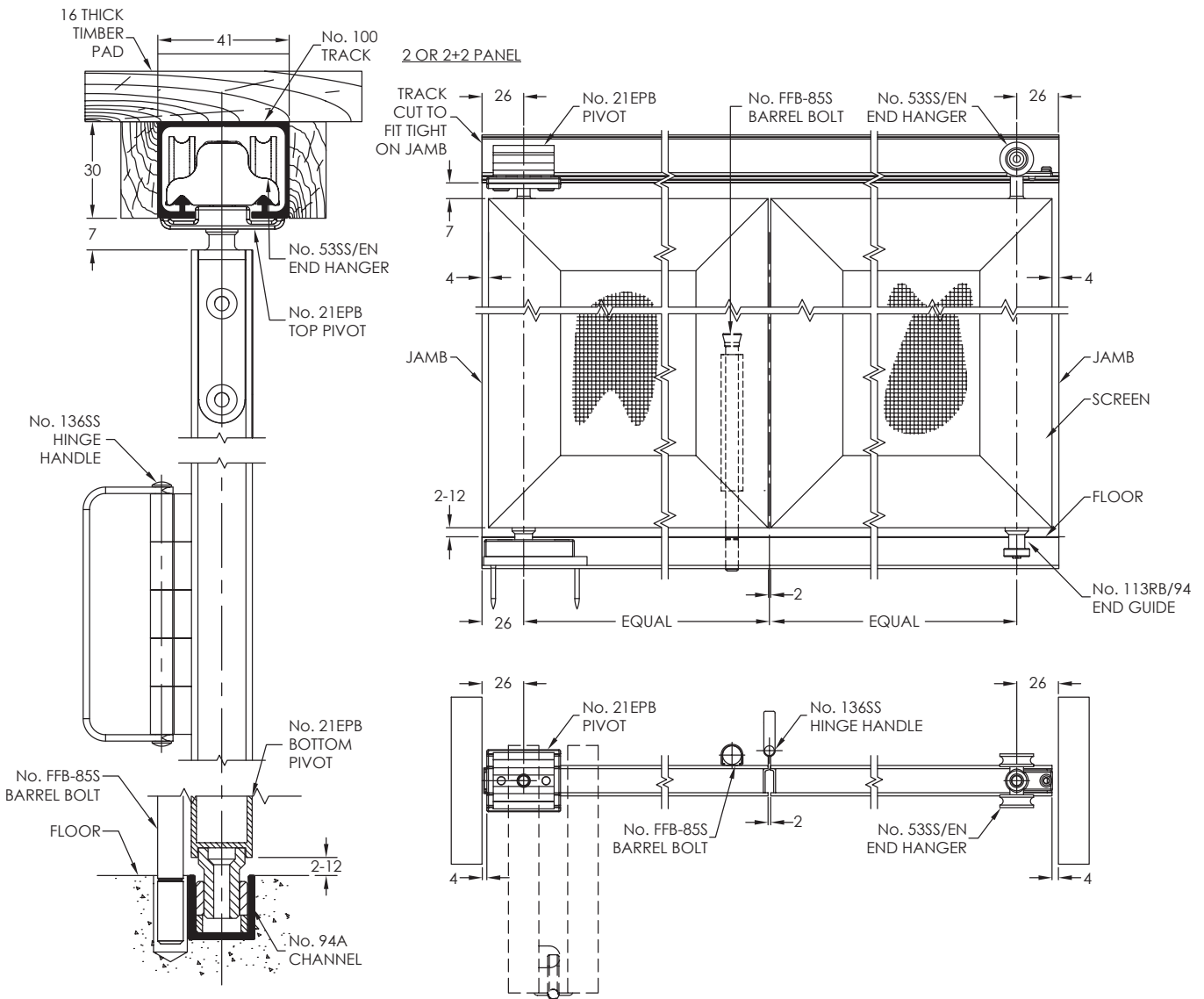
No. 113RB/94
END GUIDE



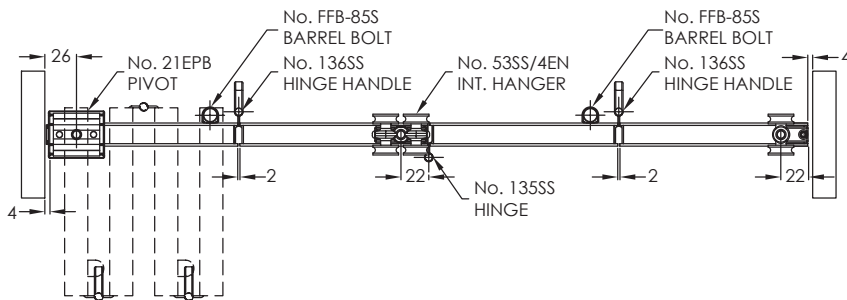
No. 135SS
HINGE



No. 136SS
HINGE HANDLE



4 PANEL



6 PANEL

