

Application

For timber sliding panels on interior and exterior applications.

Designed for straight sliding partitions or fully glazed patio doors. Also suitable for flush panelled construction.

The bottom roller design is suited to applications where the supporting structure or lintel is insufficient for the weight of the panel or where headroom is limited.

To cover the width of opening, any number of panels can be used on single or multiple lines of rail. Panels can slide to one or both sides.

Where fitted externally, a canopy is recommended to protect the top guide channel, brackets and top guide rollers.

Panel Specification

Rail System:

For Individual Panels:
Max Panel Height
Max Panel Weight
Min Panel Thickness

Timberoll 200

3000mm
200kg
40mm

Panels must be constructed with bottom rails of at least 150mm depth to accommodate the concealed, mortised bottom rollers. Panel weight is carried on the floor permitting the use of a light overhead structure.

Hardware Specification

Top Guide Tee:

Light Duty 96TA
Material Aluminium
Standard Lengths 2000mm, 3000mm, 4000mm and 6000mm.

Not recommended in situations where the panel is likely to warp since the panel could bind on the tee. The preferred option is the top guide channel and rollers. Top tee guide is drilled and countersunk for direct fitting to soffit.

Top Guide Channel:

Medium Duty 94PPA Aluminium Support & Polypropylene
Material Aluminium
Finish Mill or Clear Anodised
Standard Lengths 2000mm, 3000mm, 4000mm and 6000mm.

Heavy Duty 900A Aluminium with safety lip
Material Aluminium
Finish Clear Anodised
Standards Lengths 2000mm, 3000mm, 4000mm and 6000mm.

Top Guide Brackets:

For single line - face fitted 1SS/250 Stainless Steel
For double line - face fitted 5SS/250 Stainless Steel
Constructed from cast 316 Stainless Steel, fit at 400mm maximum centres.

Top Guide Rollers (2 per panel):

Top Plate Fitting 106RB/94
Corner Fitting 113RB/94
Cast 316 Marine grade stainless with precision stainless steel bearings
Top Plate Fitting 61SS/900 (for 900 Top Guide Channel)
Cast 316 Marine grade stainless plate with double nylon rollers with lateral adjustment to prevent rattle.

Bottom Rollers (2 per panel):

Double bogie roller 913DBA
Full stainless steel construction with precision stainless steel ball bearing wheels with side access vertical adjustment.

Bottom Rail:

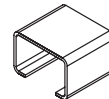
Brass 913B Rail
918 Rail with edge guides
Standard lengths 2000mm, 3000mm, 4000mm and 6000mm.
These rails are drilled and countersunk for screwing to timber floor.

Interlocker:

Material 924
Aluminium
Finish Clear Anodised (CA), Black Anodised (BLK) and Anodised Bronze (BZ)
Standard Lengths 4800mm (to suit typical 2400mm high panel)
Interlocker is drilled and countersunk, comes with brush seal.

Accessories:

Door Collector - multiple panels 924-DC
Flush Bolt 456
Flush Pull 401
Frame Seal AQ21



No. 900A
GUIDE CHANNEL



No. 96TA
TOP GUIDE



No. 94PPA
CHANNEL



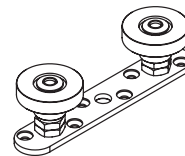
No. 913B
BOTTOM RAIL



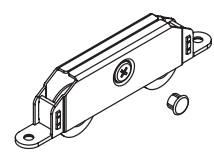
No. 918
BOTTOM RAIL
(OPTIONAL)



No. 924-48BZ
INTERLOCKER



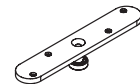
No. 61SS/900
TOP GUIDE ROLLER



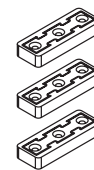
No. 913DBA
BOTTOM ROLLER



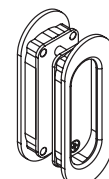
No. 113RB/94
GUIDE ROLLER



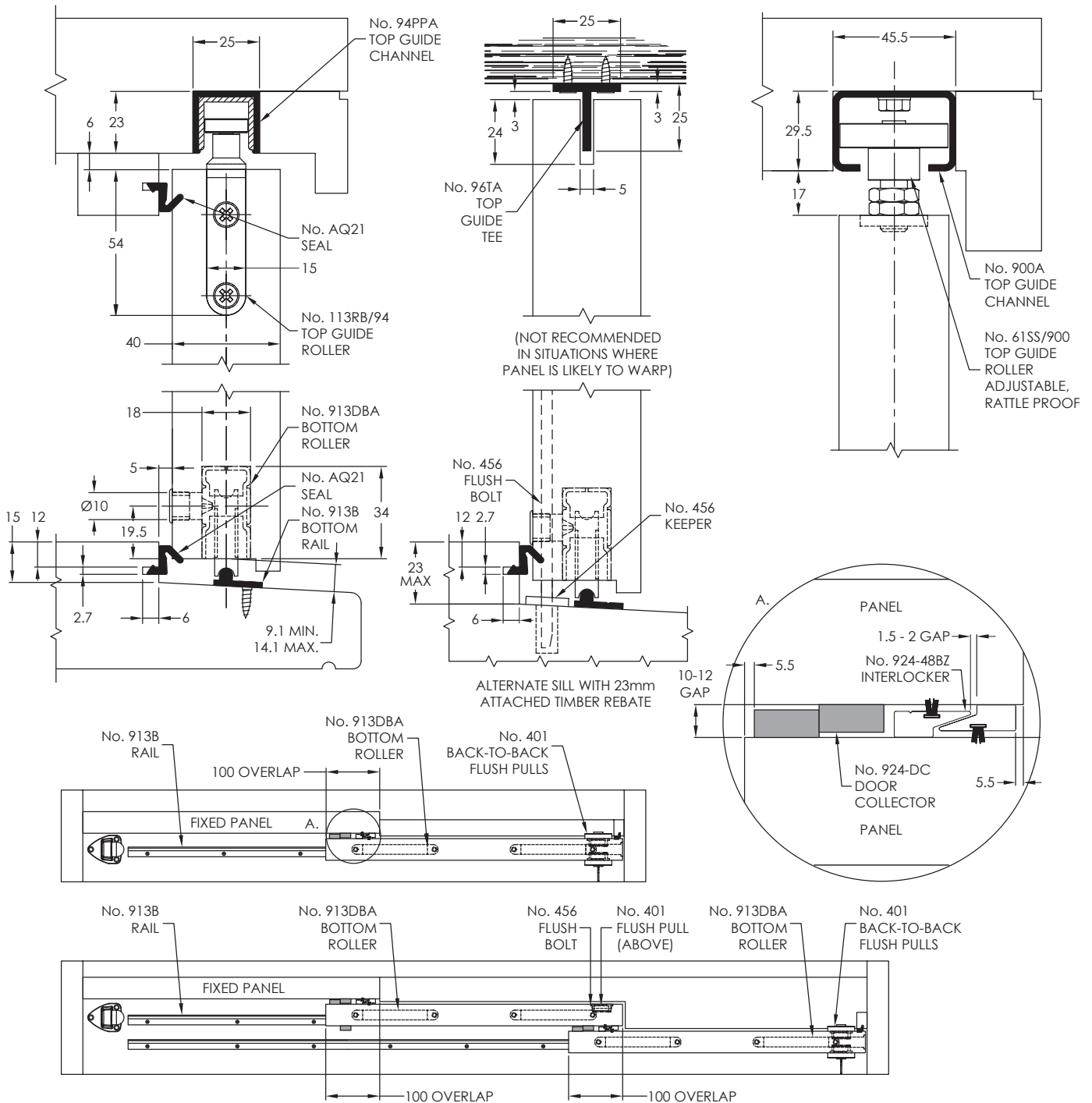
No. 106RB/94
GUIDE ROLLER



No. 924-DC
DOOR COLLECTOR



No. 401
FLUSH PULL



913DBA SIDE ADJUSTABLE ROLLER

