

### Applications

Brio's Open Square Rail Timber is an ideal internal system for residential and commercial applications of timber panels with exposed hangers and rail.

Open Square Rail Timber 150 hangers are 304 stainless steel with precision bearings

### Panel Specification

**Track System:**

For Individual Panels:

Max Panel Height  
Max Panel Width  
Max Panel Weight  
Panel Thickness

**Open Square Rail Timber 150**

3000mm  
2000mm  
150kg  
35-44mm

### Standard Packs

Packs include hangers, door stops, guide, handle, brackets and fixings

**Pack No.**

OST150  
OST150 PR

**Finishes**

Stainless Steel  
PVD Black

### Hardware Specification

**Track:**

Material  
Standard lengths  
Finishes

150SR  
Stainless Steel  
2000mm, 2500mm, 3000mm and 4000mm  
Stainless Steel and PVD Black (except 4000mm)

**Alternative Guides:**

Stainless precision bearing  
Nylon spring loaded guide

106E/94  
108N/814

**Channels:**

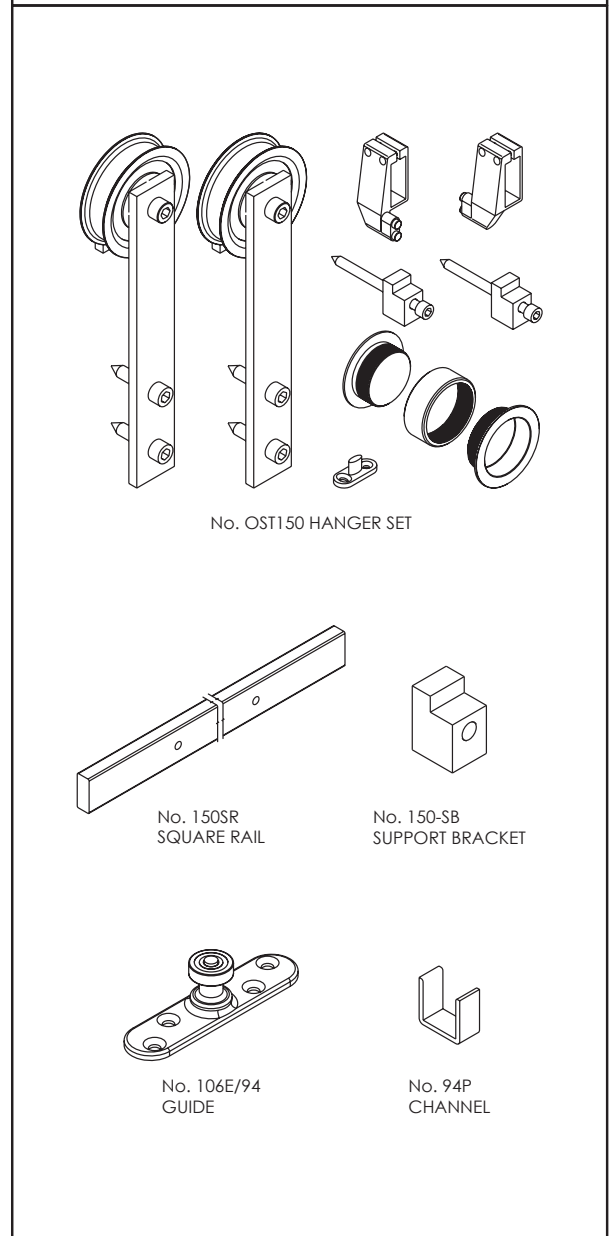
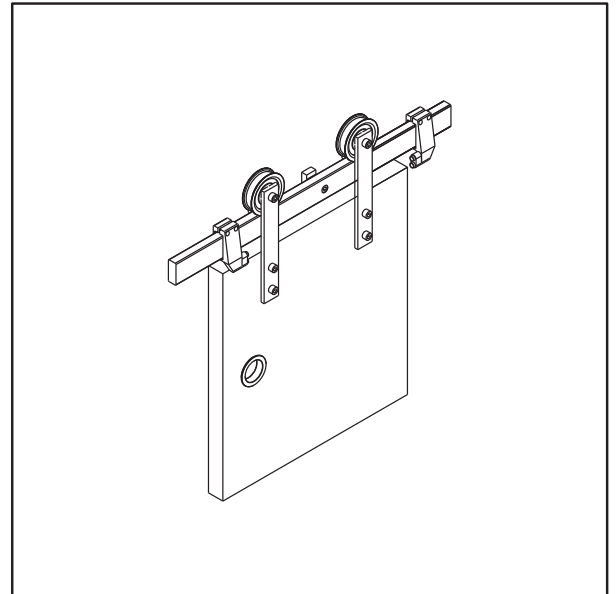
Polypropylene  
Aluminium & Polypropylene  
Aluminium  
Standard lengths

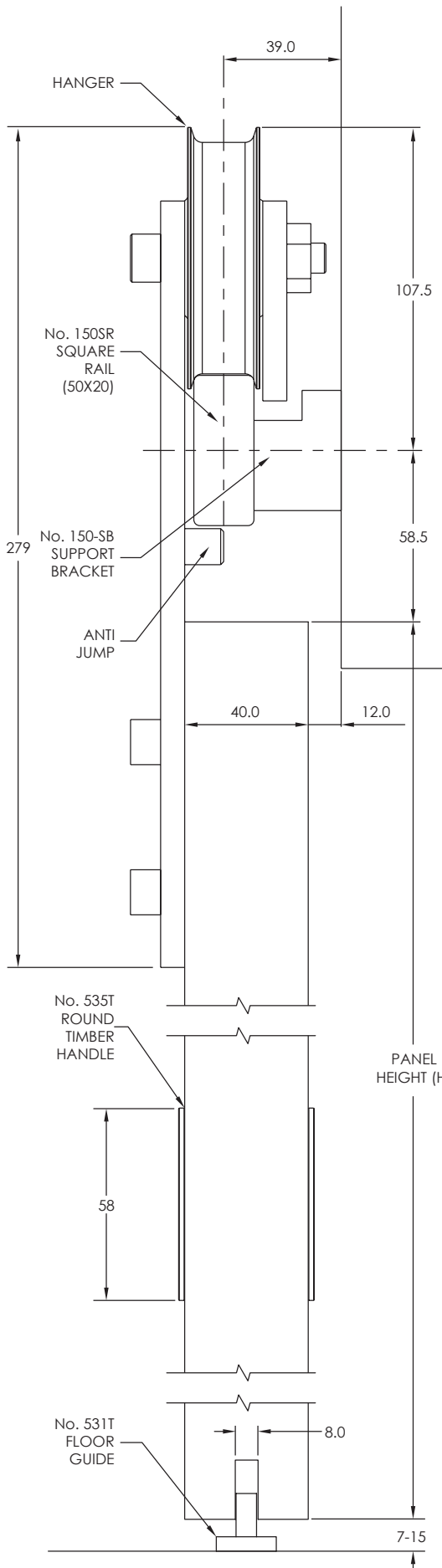
94P Black  
94PPA Mill or clear anodised  
814A Aluminium Rail Mill or clear anodised  
2000mm, 3000mm, 4000mm and 6000mm

**Support Bracket:**

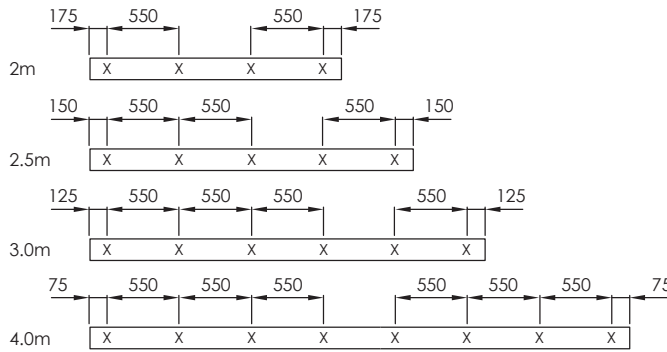
Support bracket

150-SB or 150-SBPR

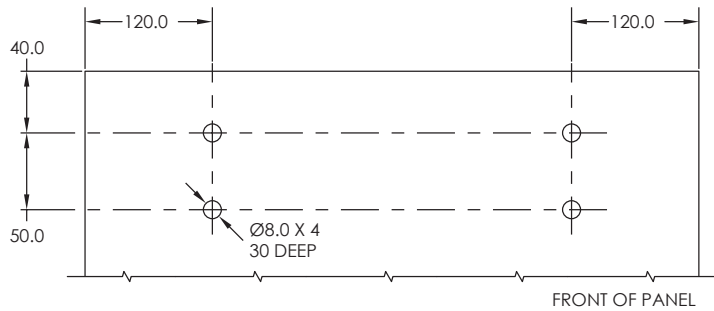




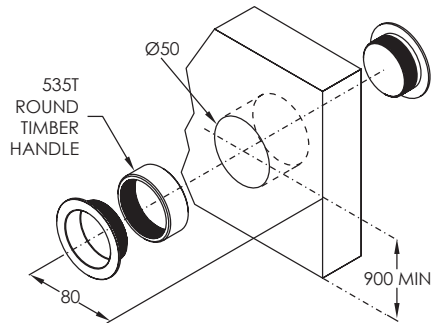
### BRACKET PLACEMENT



### PANEL PREPARATION

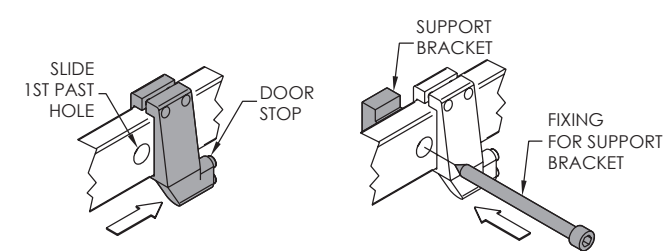


### ROUND TIMBER HANDLE



### DOOR STOP

SLIDE ON DOOR STOP BEFORE FITTING SUPPORT BRACKET



### OPTIONAL GUIDES

