

Application

For timber sliding panels on interior and exterior applications.

Designed for straight sliding partitions or fully glazed patio doors. Also suitable for flush panelled construction.

The bottom roller design is suited to applications where the supporting structure or lintel is insufficient for the weight of the panel or where headroom is limited.

To cover the width of opening, any number of panels can be used on single or multiple lines of rail. Panels can slide to one or both sides.

Where fitted externally, a canopy is recommended to protect the top guide channel, brackets and top guide rollers.

Panel Specification

Rail System:	Timberoll 100
For Individual Panels:	
Max Panel Height	2400mm
Max Panel Weight	100kg
Min Panel Thickness	40mm

Panels must be constructed with bottom rails of at least 150mm depth to accommodate the concealed, mortised bottom rollers. Panel weight is carried on the floor permitting the use of a light overhead structure.

Hardware Specification

Top Guide Channel:	
Medium Duty	94PPA Aluminium Support & Polypropylene
Material	Aluminium
Finish	Mill or Clear Anodised
Standard Lengths	2000mm, 3000mm, 4000mm and 6000mm.

Heavy Duty	900 Aluminium with safety lip
Material	Aluminium
Finish	Clear Anodised
Standard Lengths	2000mm, 3000mm, 4000mm and 6000mm.

Top Guide Brackets:	
For single line - face fitted	1SS/250 Stainless Steel
For double line - face fitted	5SS/250 Stainless Steel
Constructed from cast 316 Stainless Steel, fit at 400mm maximum centres.	

Top Guide Rollers (2 per panel):	
Top Plate Fitting	106RB/94
Corner Fitting	113RB/94
Cast 316 Marine grade stainless with precision stainless steel bearings	

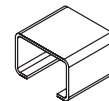
Top Plate Fitting	61SS/900 (for 900 Top Guide Channel)
Cast 316 Marine grade stainless plate with double nylon rollers with lateral adjustment to prevent rattle.	

Bottom Rollers (2 per panel):	
Double bogie roller	913DBA - N
Plated steel construction with precision bearing nylon wheels with side access vertical adjustment.	

Bottom Rail:	
Material	913A Aluminium
Finish	Clear anodised
Standard Lengths	2000mm, 3000mm, 4000mm and 6000mm
Bottom Rail is drilled and countersunk for direct fitting.	

Interlocker:	
Material	924 Aluminium
Finish	Clear Anodised (CA), Black Anodised (BLK) and Anodised Bronze (BZ)
Standard Lengths	4800mm (to suit typical 2400mm high panel)
Interlocker is drilled and countersunk, comes with brush seal.	

Accessories:	
Door Collector - multiple panels	924-DC
Flush Bolt	456
Flush Pull	401
Frame Seal	AQ21



No. 900A
GUIDE CHANNEL



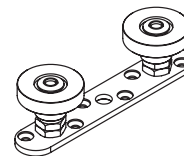
No. 94PPA
CHANNEL



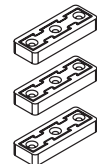
No. 913A
BOTTOM RAIL



No. 924-48BZ
INTERLOCKER



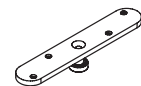
No. 61SS/900
TOP GUIDE ROLLER



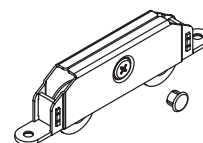
No. 924-DC
DOOR COLLECTOR



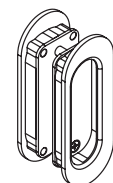
No. 113RB/94
GUIDE ROLLER



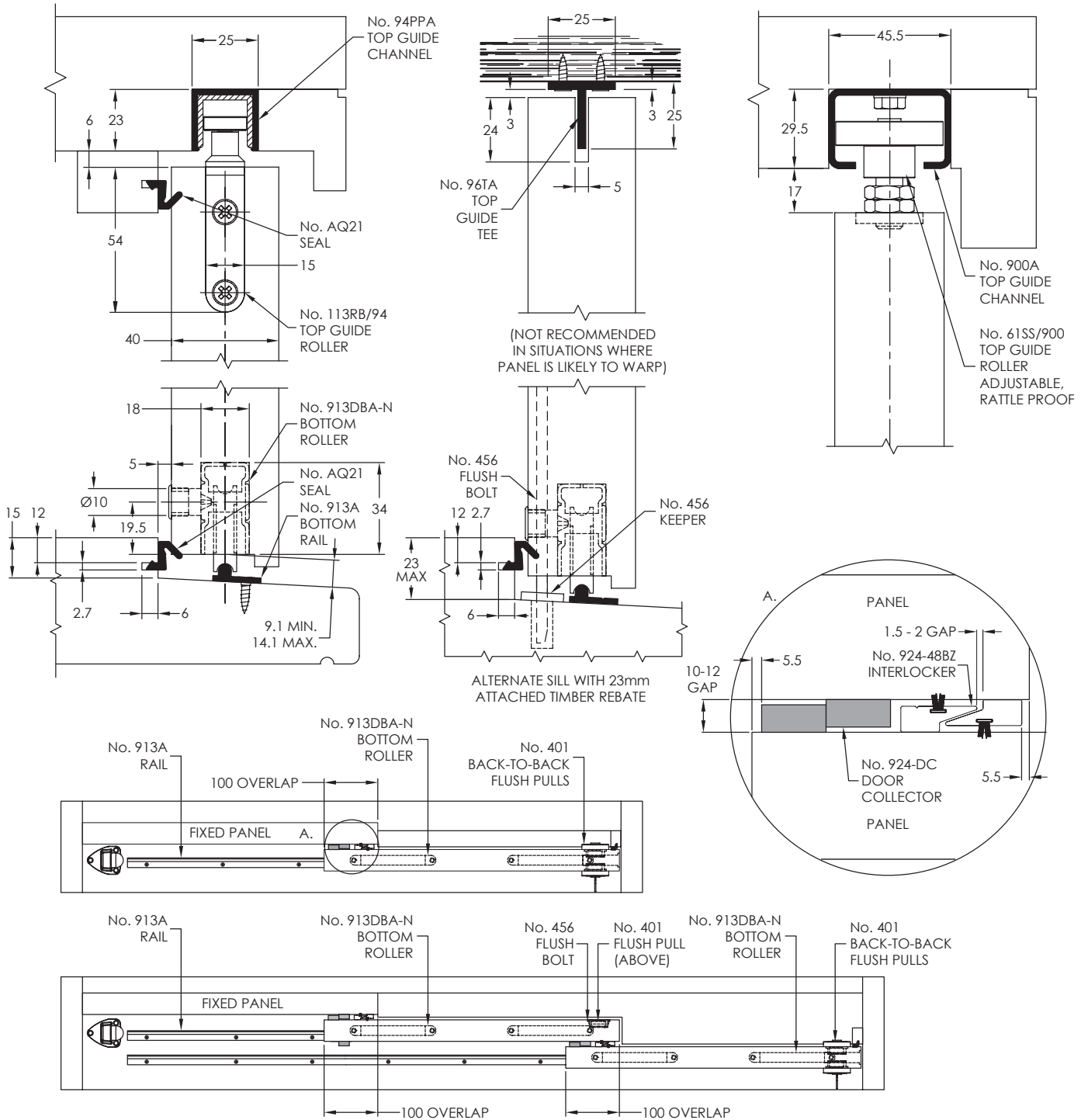
No. 106RB/94
GUIDE ROLLER



No. 913DBA-N
BOTTOM ROLLER



No. 401
FLUSH PULL



913DBA-N SIDE ADJUSTABLE ROLLER

