

Application

For timber sliding panels on interior and exterior applications.

Designed for straight sliding partitions or fully glazed patio doors. Also suitable for flush panelled construction.

The bottom roller design is suited to applications where the supporting structure or lintel is insufficient for the weight of the panel or where headroom is limited.

To cover the width of opening, any number of panels can be used on single or multiple lines of rail. Panels can slide to one or both sides.

Where fitted externally, a canopy is recommended to protect the top guide channel, brackets and top guide rollers.

Panel Specification

Rail System:

For Individual Panels:
Max Panel Height
Max Panel Weight
Min Panel Thickness

Timberoll 200

3000mm
200kg
40mm

Panels must be constructed with bottom rails of at least 150mm depth to accommodate the concealed, mortised bottom rollers. Panel weight is carried on the floor permitting the use of a light overhead structure.

Hardware Specification

Top Guide Channel:

Medium Duty
Material
Finish
Standard Lengths

94PPA Aluminium Support & Polypropylene
Aluminium
Mill or Clear Anodised
2000mm, 3000mm, 4000mm and 6000mm.

Heavy Duty

Material
Finish
Standards Lengths

900A Aluminium with safety lip
Aluminium
Clear Anodised
2000mm, 3000mm, 4000mm and 6000mm.

Top Guide Brackets:

For single line - face fitted
For double line - face fitted

1SS/250 Stainless Steel
5SS/250 Stainless Steel

Constructed from cast 316 Stainless Steel, fit at 400mm maximum centres.

Top Guide Rollers (2 per panel):

Top Plate Fitting
Corner Fitting

106RB/94
113RB/94

Cast 316 Marine grade stainless with precision stainless steel bearings

Top Plate Fitting

61SS/900 (for 900 Top Guide Channel)

Cast 316 Marine grade stainless plate with double nylon rollers with lateral adjustment to prevent rattle.

Bottom Rollers (2 per panel):

Double bogie roller

913DBA-SS

Full stainless steel construction with precision stainless steel ball bearing wheels with side access vertical adjustment.

Bottom Rail:

Brass

913B Rail

Standard lengths

2000mm, 3000mm, 4000mm and 6000mm.

These rails are drilled and countersunk for screwing to timber floor.

Interlocker:

Material
Finish

924
Aluminium
Clear Anodised (CA), Black Anodised (BLK) and Anodised Bronze (BZ)

Standard Lengths

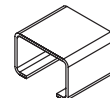
4800mm (to suit typical 2400mm high panel)

Interlocker is drilled and countersunk, comes with brush seal.

Accessories:

Door Collector - multiple panels
Flush Bolt
Flush Pull
Frame Seal

924-DC
456
401
AQ21



No. 900A
GUIDE CHANNEL



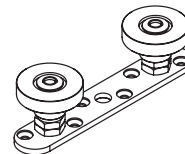
No. 94PPA
CHANNEL



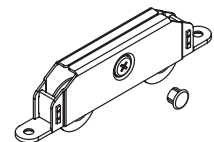
No. 913B
BOTTOM RAIL



No. 924-48BZ
INTERLOCKER



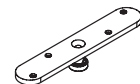
No. 61SS/900
TOP GUIDE ROLLER



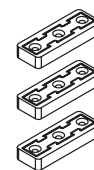
No. 913DBA-SS
BOTTOM ROLLER



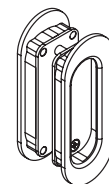
No. 113RB/94
GUIDE ROLLER



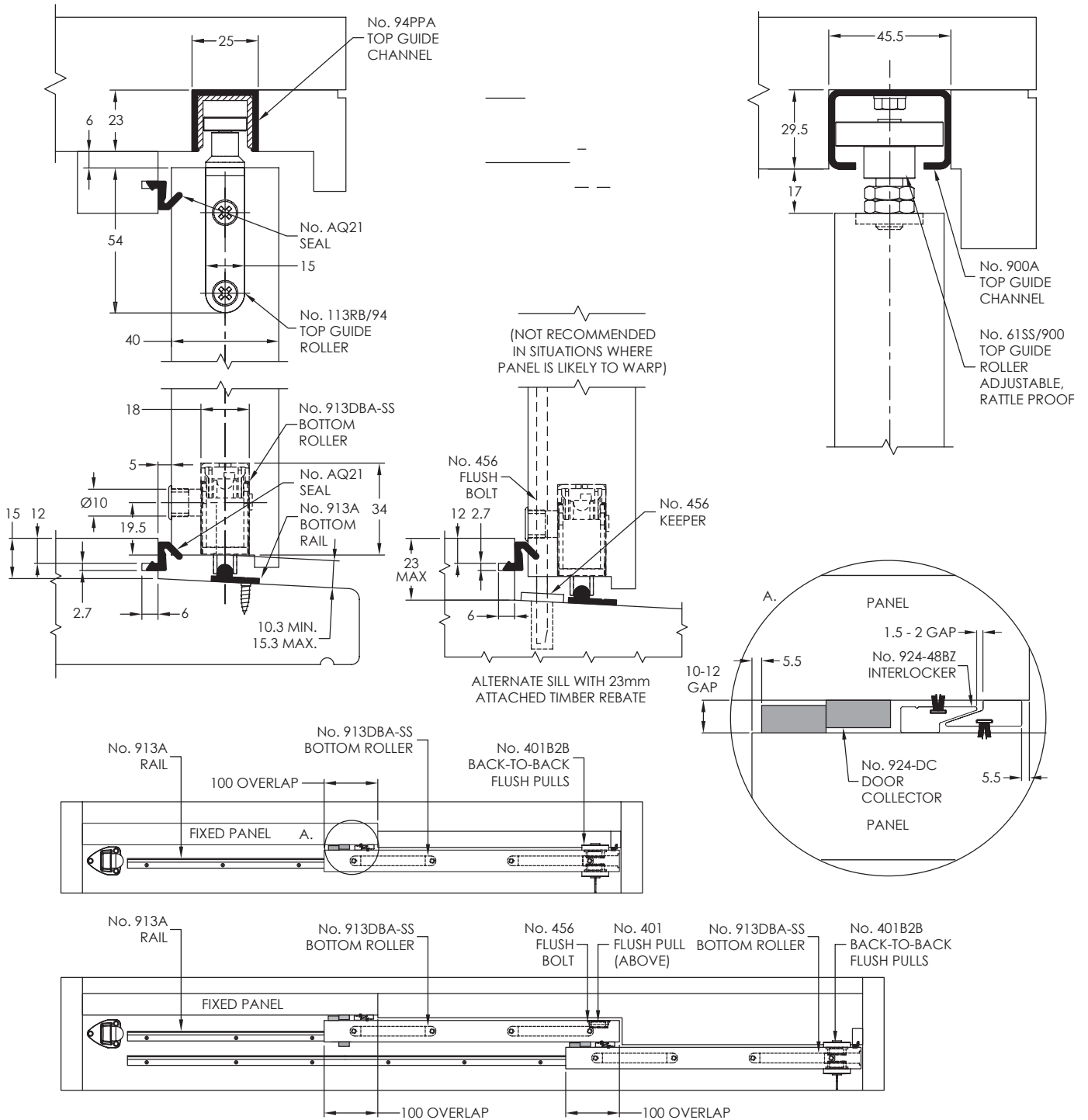
No. 106RB/94
GUIDE ROLLER



No. 924-DC
DOOR COLLECTOR



No. 401B2B
BACK-TO-BACK
FLUSH PULLS



913DBA-SS SIDE ADJUSTABLE ROLLER

