

Brio® Weatherfold 5c 80

Brio Australia

P: +61 2 87186718

W: brio.com.auE: brio.sales@allegion.com

Brio UK

P: +44 191 2291224

W: briouk.comE: brio.sales.uk@allegion.com

Brio USA

P: +1 585 3195599

W: briousa.comE: brio.sales.usa@allegion.com

Codes

B WC 4 - 80 S H SS

Finish: SS (Satin Stainless)

Hinge Type: See section Hinge Installation (page 5)

Bearing Type: S (Stainless Steel Bearing)

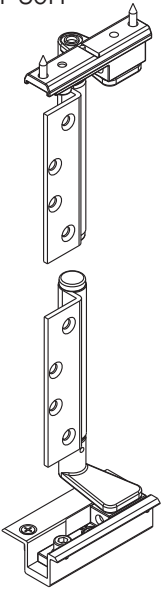
Load Capacity: 80kg

Set No.: 1 (Pivot Set), 2 (End Roller Set), 4 (Intermediate Roller Set),
3 (Hinge Handle Set), 5 (Hinge Set), 6 (Offset Hinge Set),
7 (Offset Hinge Handle Set)

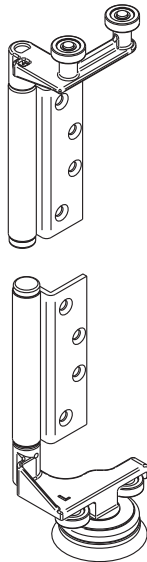
Brio Weatherfold 5c

Sets all sets shown with hinge type H. No finishes shown.

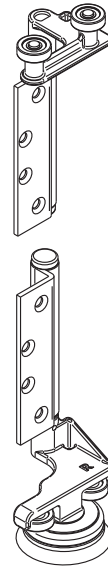
BWC1-80H



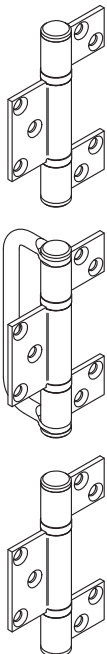
BWC2L-80SH



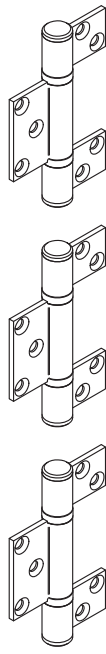
BWC2R-80SH



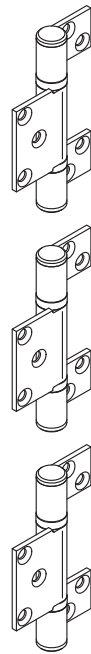
BW3-100H



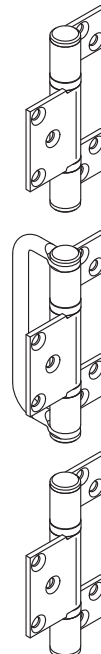
BW5-100H



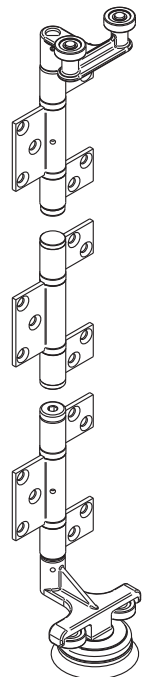
BW6-100H



BW7-100H



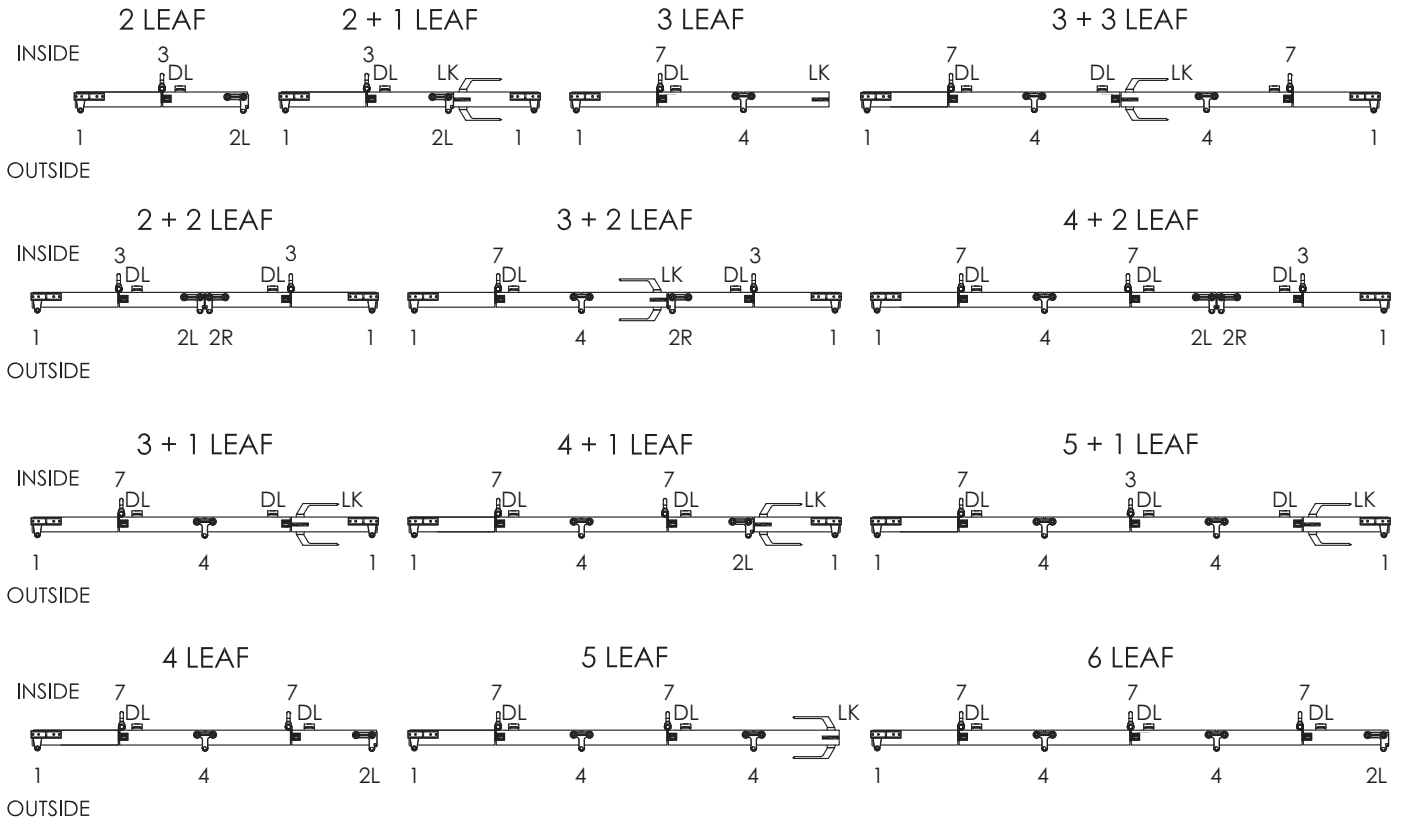
BWC4-80SH



Door Hardware Set Orientation

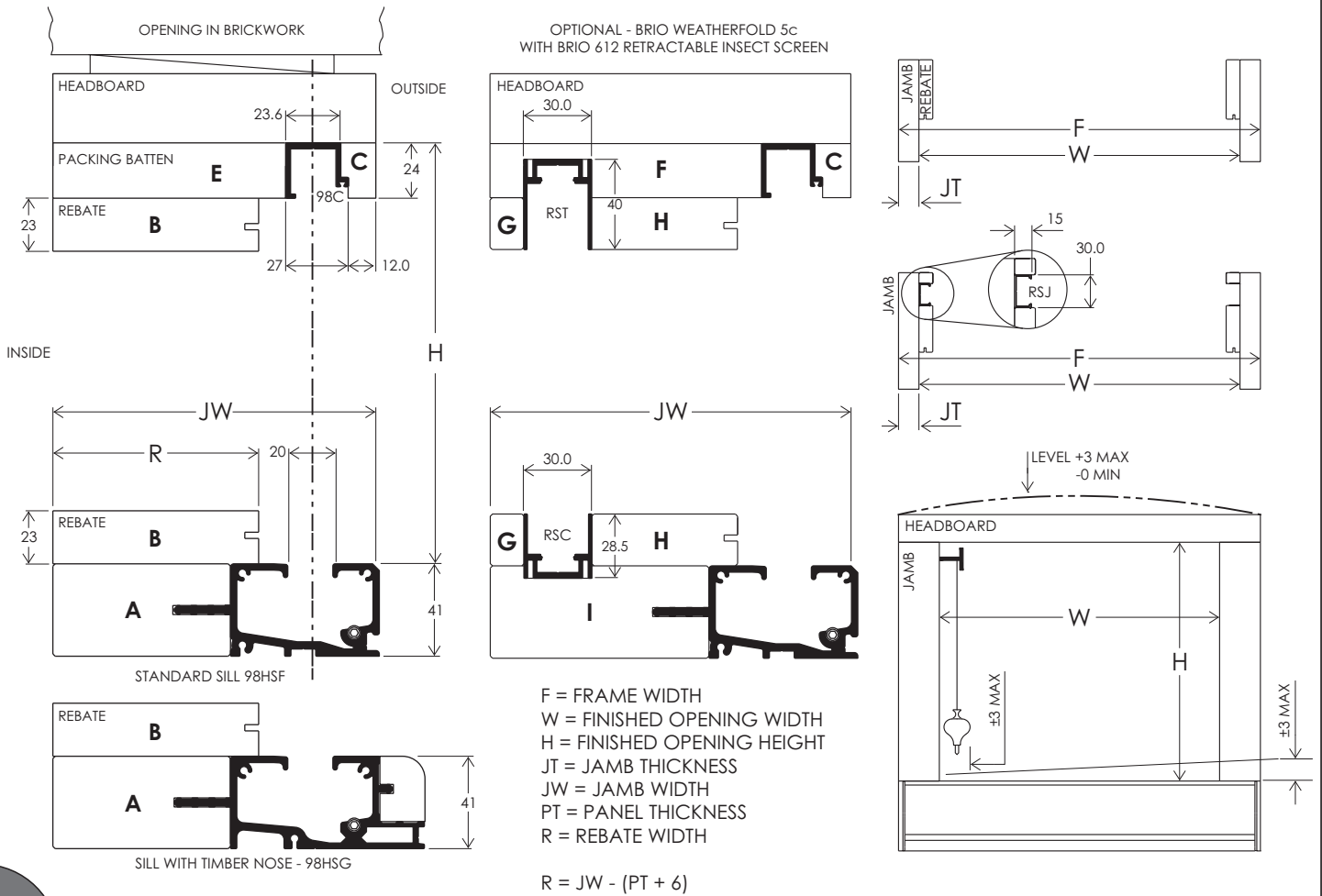
DL = Dual Point Lock, LK = Lock, L = Left, R = Right

OUTWARD OPENING



Opening Preparation

outward opening system shown, dimensions shown in mm

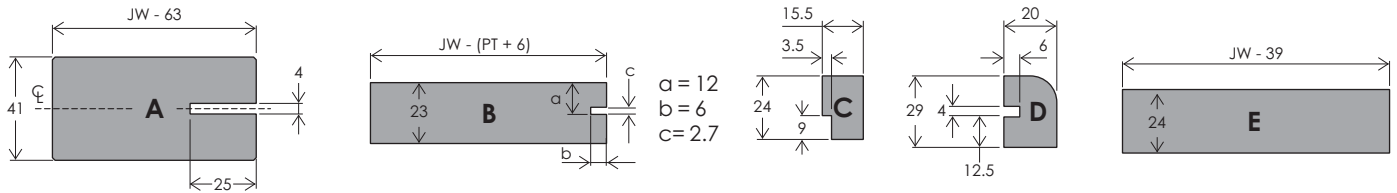


Sill and Channel Preparation

Frame - without 612 retractable screen. Cut timbers to length

A & D = F - 6 (Frame Width - 6)

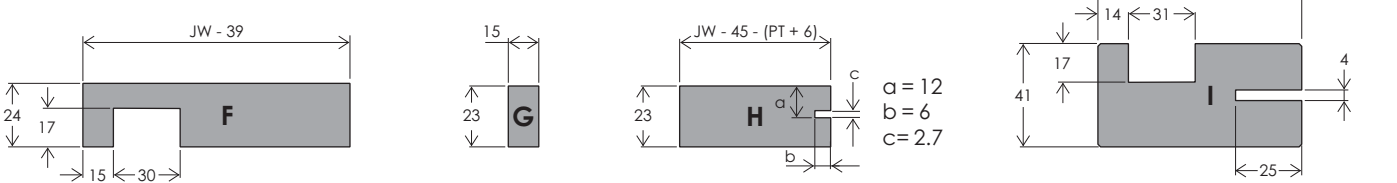
B, C, E = W (Finished Opening Width)



Frame - 612 retractable screen integrated. Cut timbers to length

I & D = F - 6 (Frame width - 6)

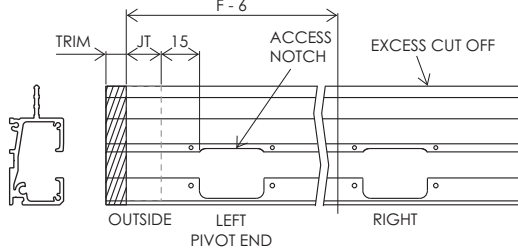
C, F, G, H = W (Finished Opening width)



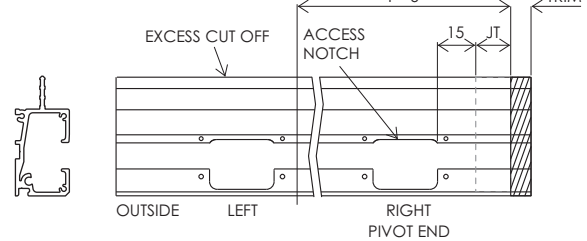
Sill supplied with notches at each end.

Trim pivot end for the Jamb Thickness (JT), before cutting Frame Width - 6 (F - 6)

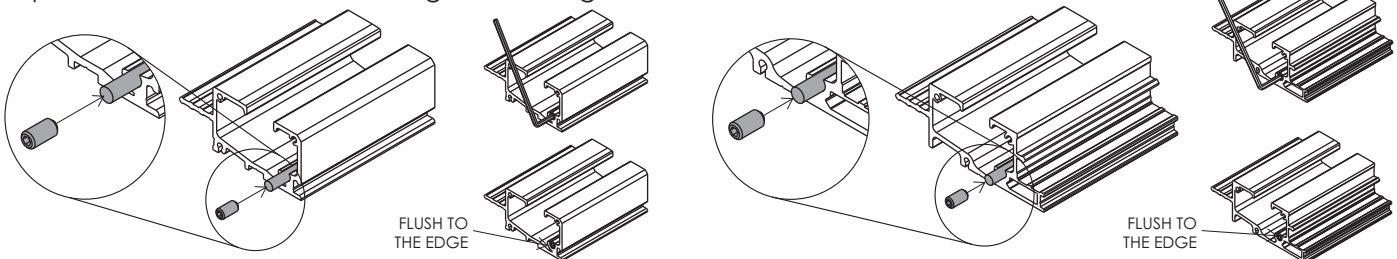
LEFT HAND SYSTEM



RIGHT HAND SYSTEM

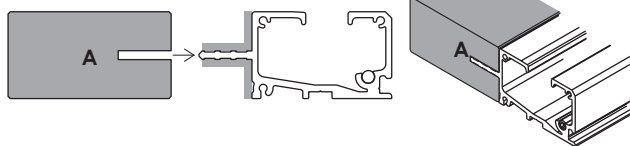


Cut rod (Sill Width - 25). Insert rod and wind grub screw until flush with the end of the sill. Repeat on the other side, ensuring it is fixed tight.

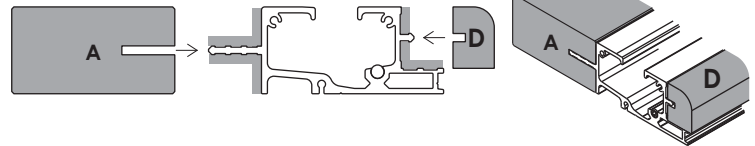


Fix timber to sill with building adhesive. Note: Use "I" if installing screen

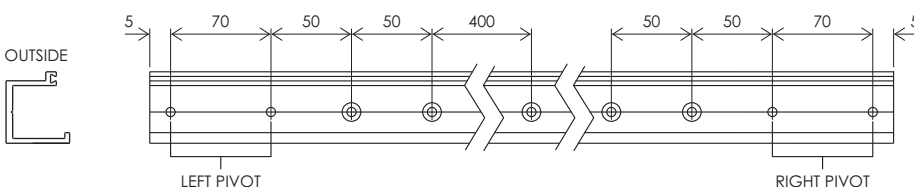
STANDARD SILL - 98HSF



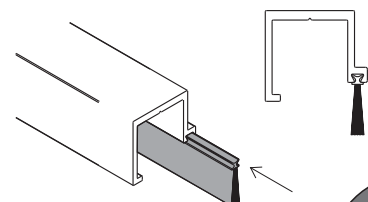
SILL WITH TIMBER NOSE - 98HSG



Cut Channel to length 'W' (Finished Opening Width). Drill 2 x Ø3.5mm holes for the pivot, then drill holes Ø3.5 and countersink.

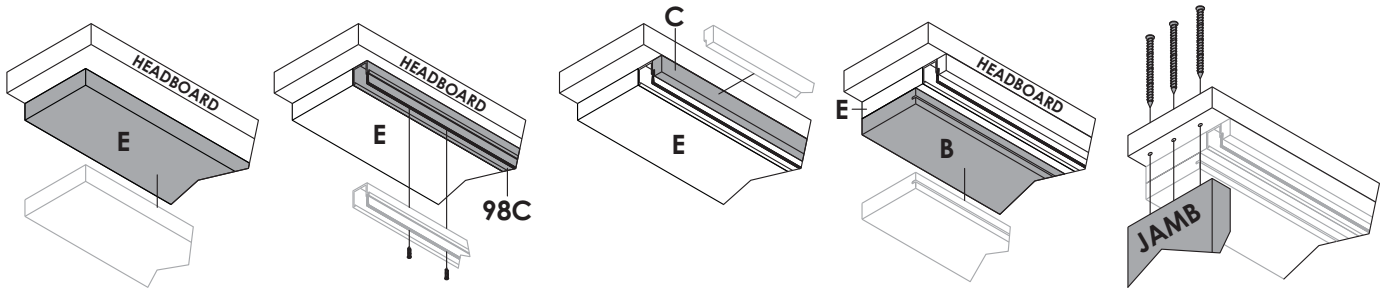


Insert PS16 polypile

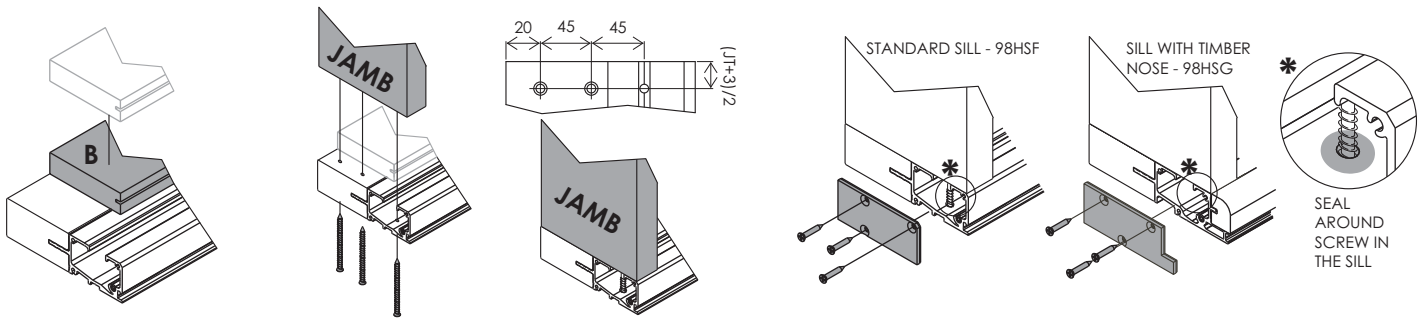


Frame Assembly

1. Pin E to headboard
2. Screw fix 98C
3. Pin C to headboard
4. Pin B to E
5. Screw fix head to jamb



1. Pin B to sill
2. Screw fix jamb to sill
3. Screw fix end caps to sill



Screen option head assembly.

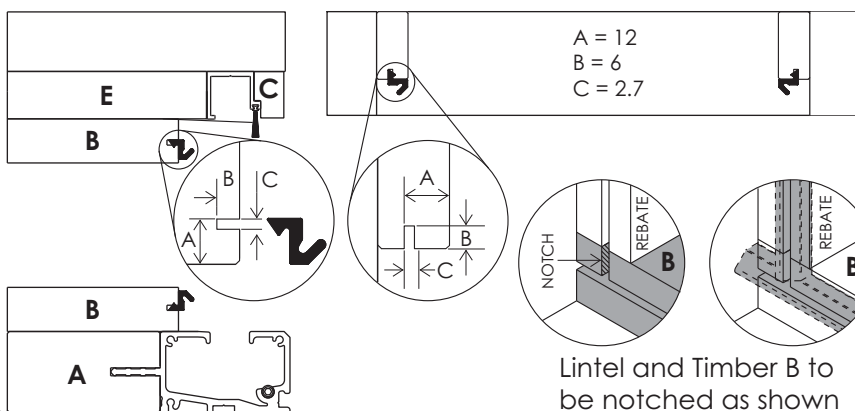
1. Pin F to headboard
2. Screw fix 98C
3. Pin C to headboard
4. Screw fix RST track
5. Pin H to F
6. Pin G to F

Screen option sill assembly

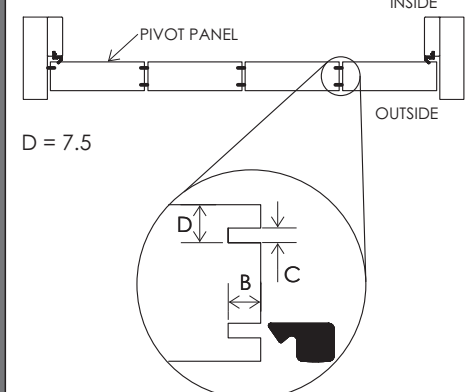
1. Pin H to sill
2. Screw fix RSC to sill
3. Pin G to sill

Seal Preparation left, outward opening system shown

Frame - AQ21 (perimeter seals to butt against each other in all corners)

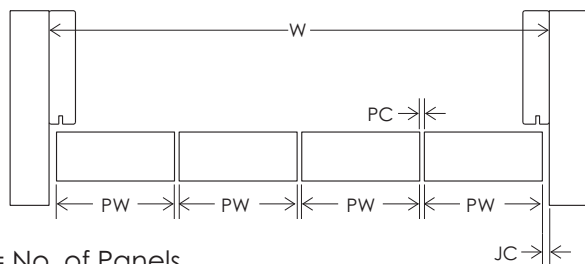


Panel - AQ63



Panel Size Calculation

Brio Weatherfold 5c allows for equal size panels



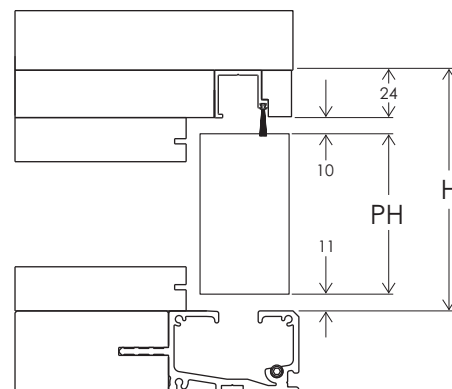
N = No. of Panels

PW = Panel Width

JC = Jamb Clearance = 6 $PW = \frac{W - [PC(N-1) + 2(JC)]}{N}$

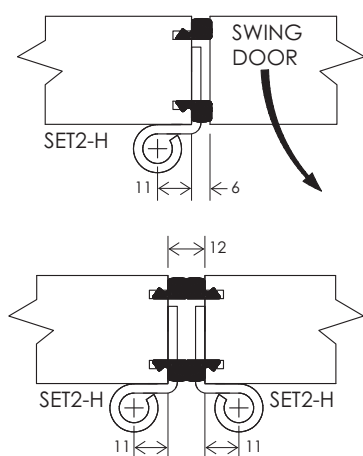
PC = Panel Clearance = 4

PH (Panel Height) = H - 45



Meeting Door Selection

2 Meeting square doors



Hinge Installation

pilot hole Ø2.5mm recommended

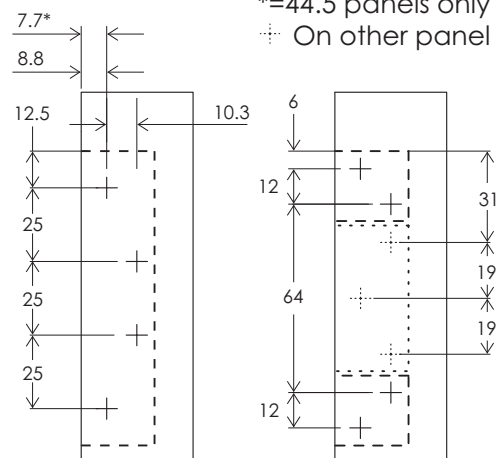
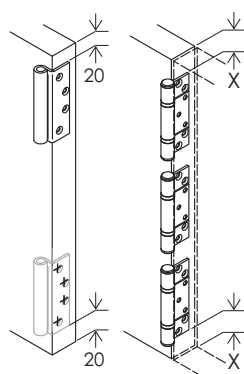
Non-mortice H
38-68 Panel Thickness

X=20 on Set 4

X=60 min on Sets 3, 5, 6 & 7

*=44.5 panels only

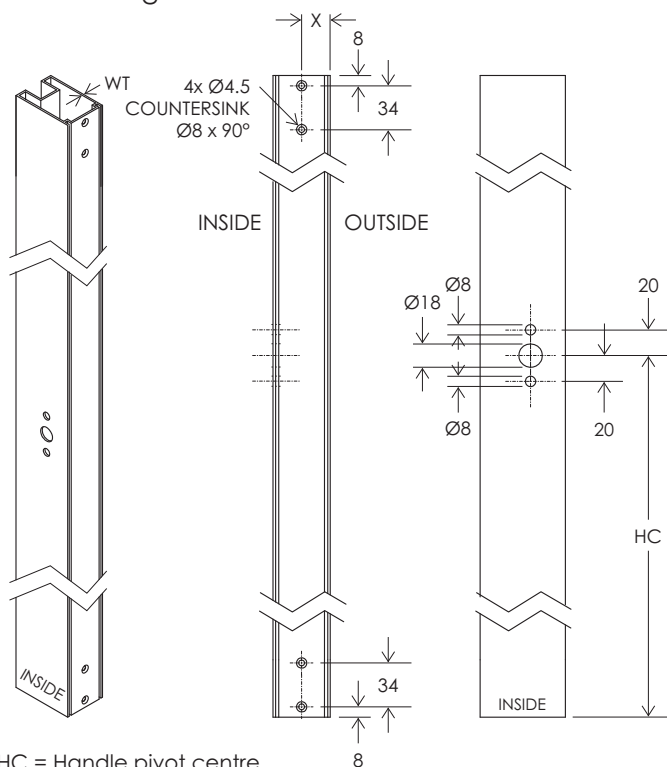
On other panel



286 Dual Point Lock

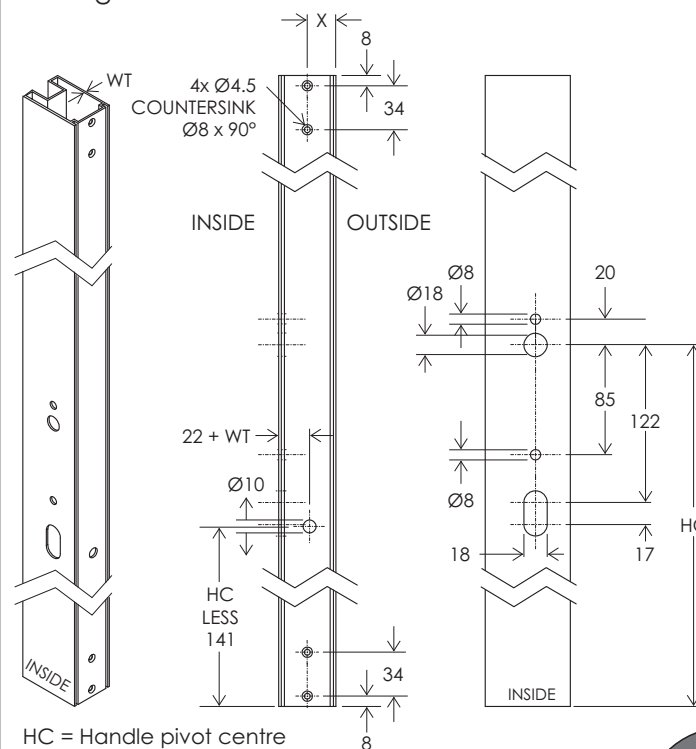
see 286 dual point aluminium lock instructions (INST286D) for further details

Non-Locking



HC = Handle pivot centre
X = PT - 30

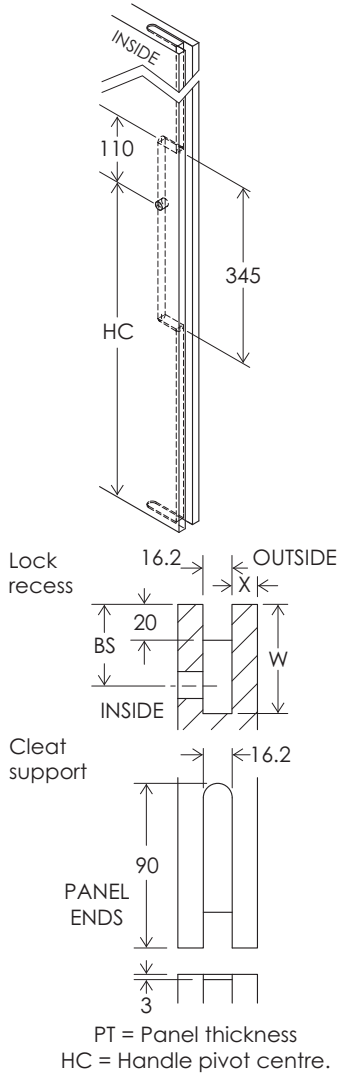
Locking



HC = Handle pivot centre
WT = Wall thickness
X = PT - 30

286 Dual Point Lock see 286 dual point timber lock instructions (INST286TC) for further details

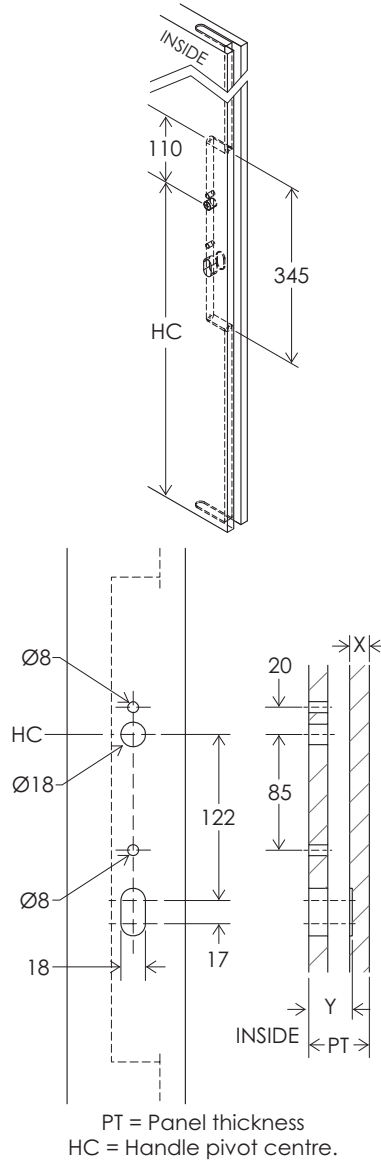
Cleat support & Lock recess



PT	'X'
38	8.4
44.5	15.2
54	8
58	8

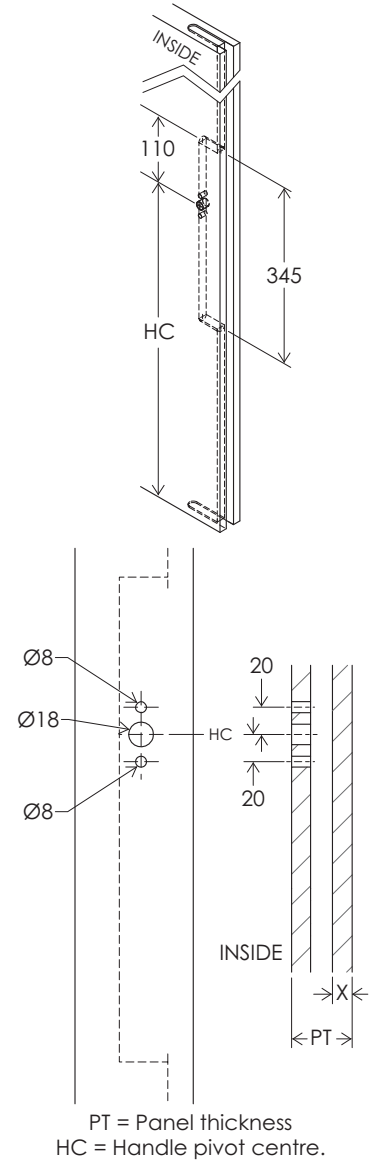
'BS'	'W'
35	51
45	61

Locking handle



PT	'X'	'Y'
38	8.4	32
44.5	15.2	32
54	8	41
58	8	45

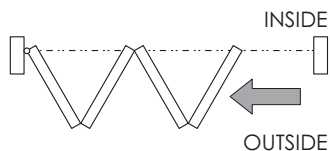
Non-locking handle



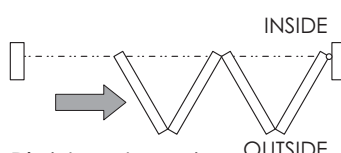
PT	'X'
38	8.4
44.5	15.2
54	8
58	8

Handing Sets type H only

Determining system orientation

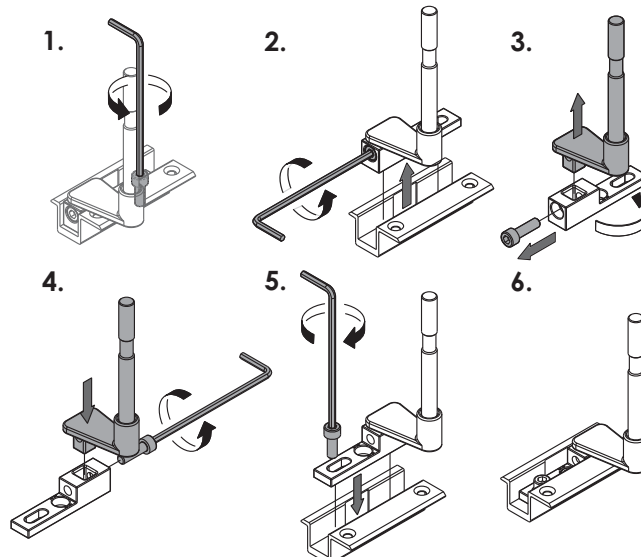


Left, outward opening system

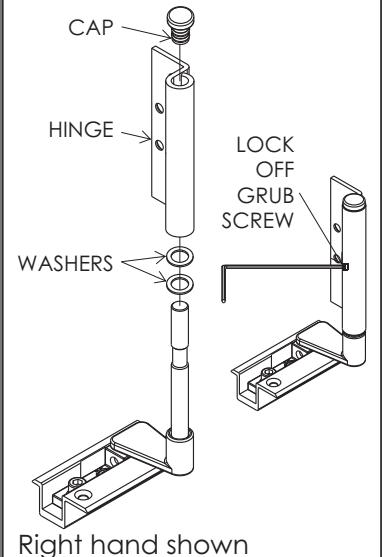


Right, outward opening system

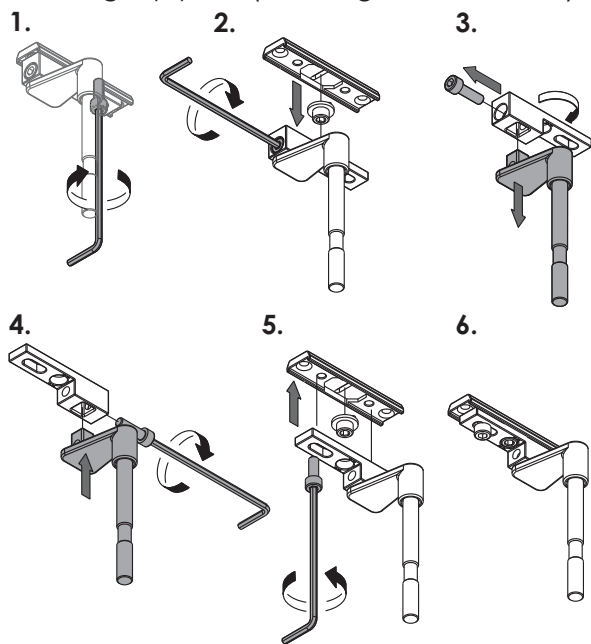
Handing bottom pivot (left to right hand shown)



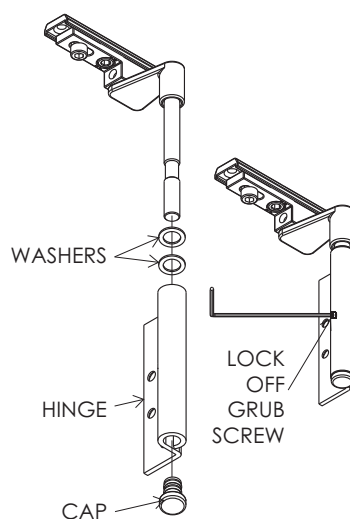
Fit washers, hinge and cap



Handing top pivot (left to right hand shown)

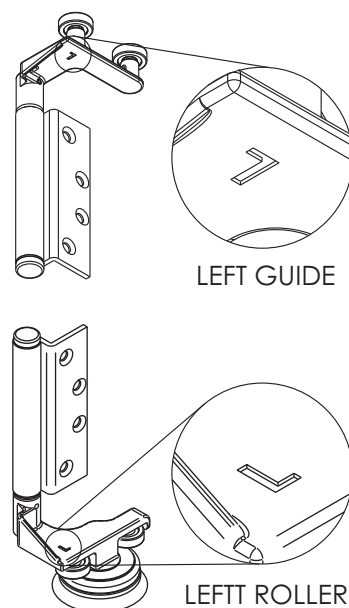


Fit washers, hinge and cap



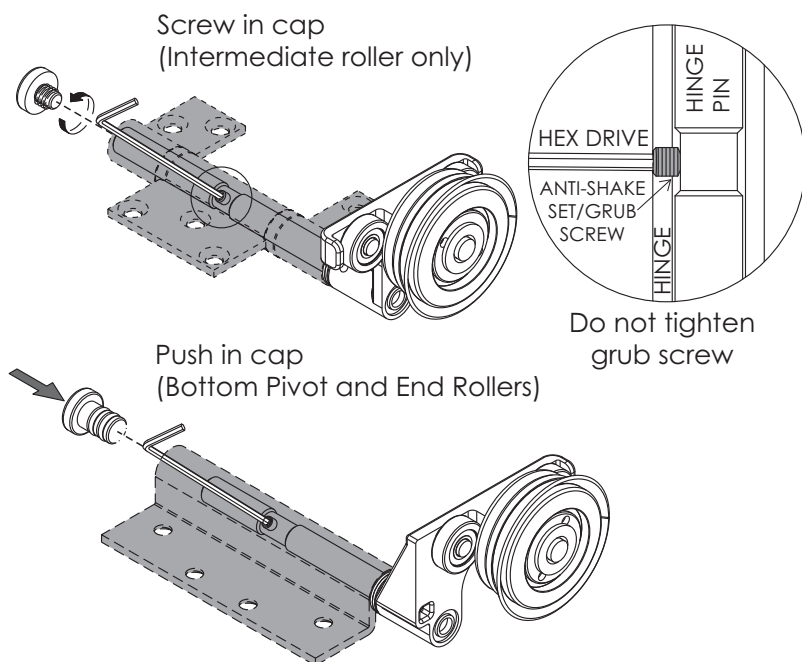
Right hand shown

Handing indicator shown



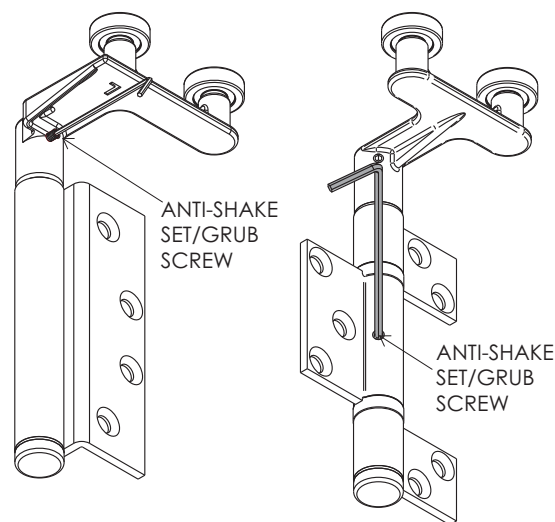
Hardware Features

Hardware security



Type H hinge shown

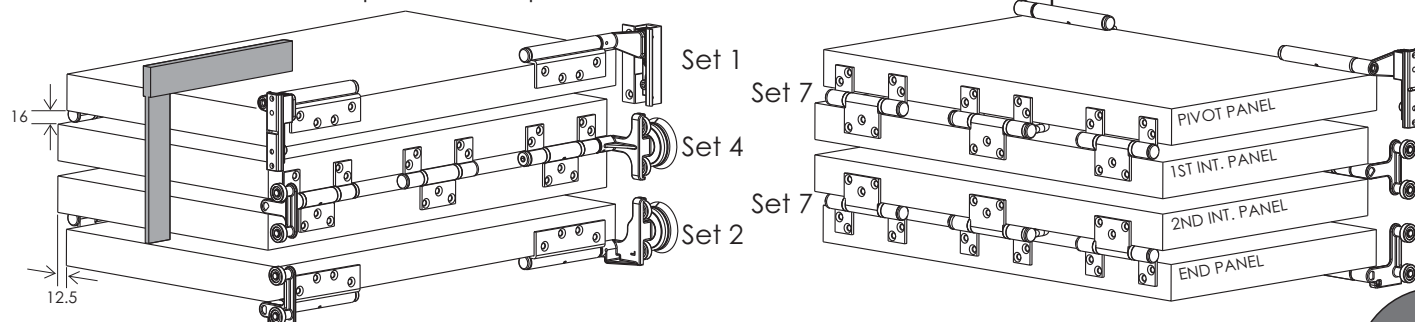
Guide security



End (left guide) and intermediate shown

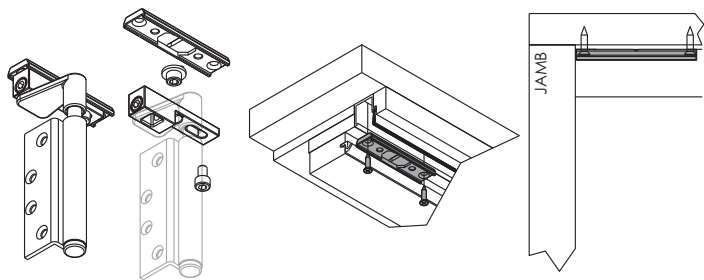
Attaching Hardware to Panels recommended before installation

Ensure doors are level and square from top

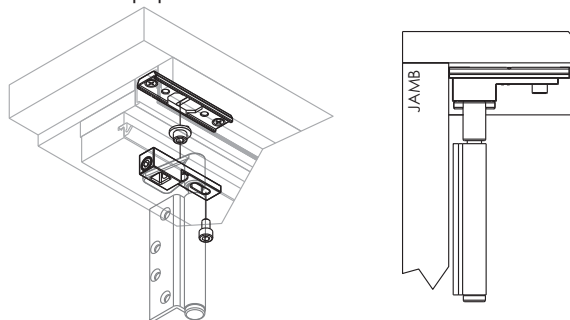


Installing Hardware clean down inside of sill and channel

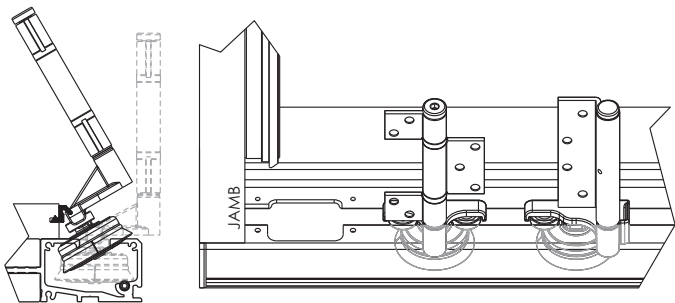
Dismantle top pivot and screw fix plate into channel



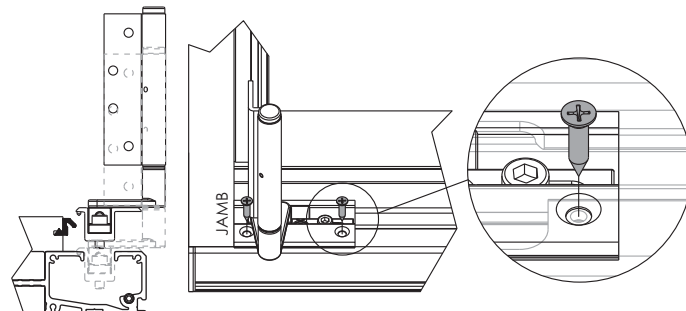
Reassemble top pivot into channel



Insert rollers through access notch in correct order

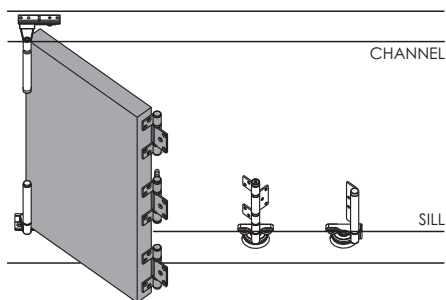


Insert bottom pivot in the sill and screw fix to sill.



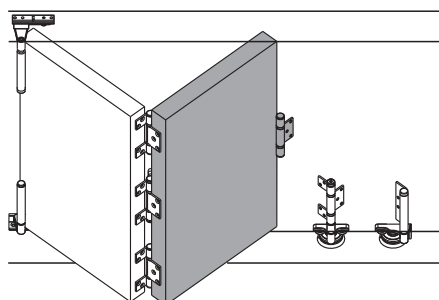
Hanging Panels Left hand system shown

Bring pivot panel to pivot set



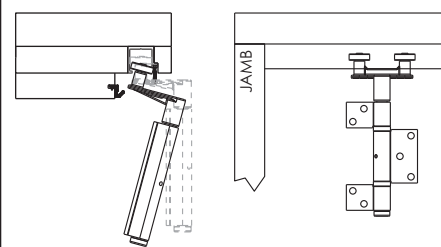
Hinge set 7 attached to panel

Bring 1st int. panel to pivot panel

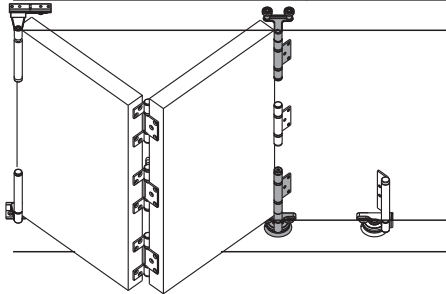


Middle hinge of int. set attached

Insert intermediate guide into the channel

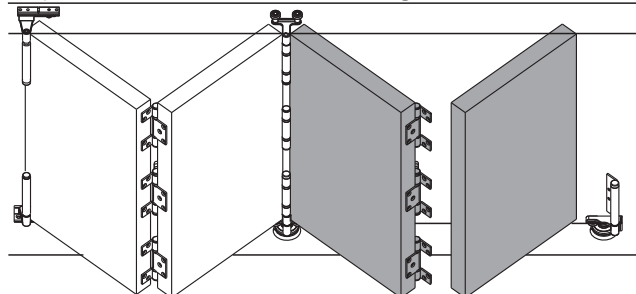


Attach int. roller to int. panel



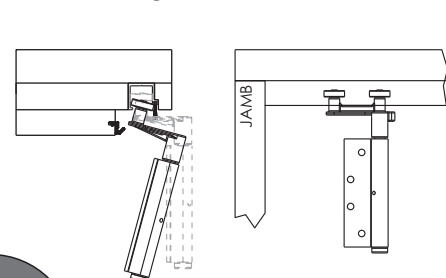
Fix int. guide to int. panel

Bring 2nd int. panel to the int. set with hinge set 7

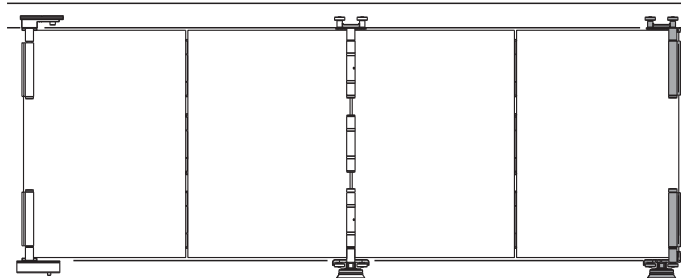


Bring end panel to hinge set 7

Insert end guide into the channel



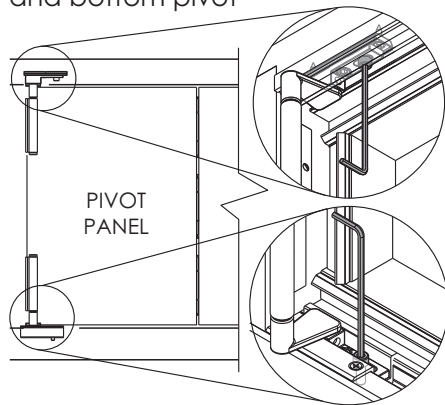
Fix end panel to end roller



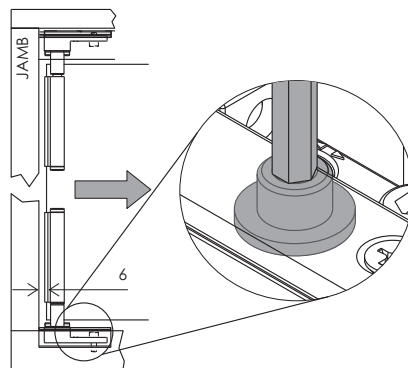
Attach end guide to end panel, close all panels

Adjustment

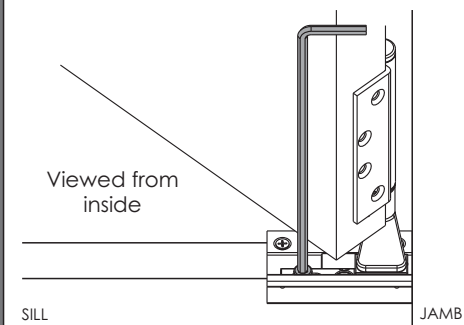
Loosen cap screws on the top and bottom pivot



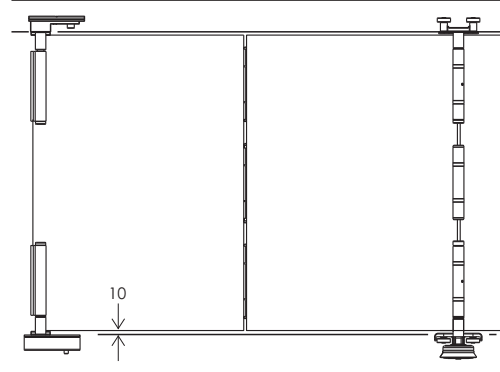
Adjust bottom pivot to allow 6mm approx. between panel and jamb.



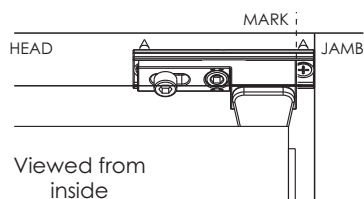
Partially open doors - lock off 1st cap screw. Open fully, lock off 2nd cap screw (bottom pivot only)



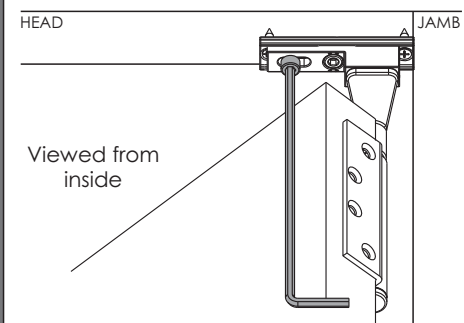
Close all doors and check clearance between panels and sill



Mark top pivot position

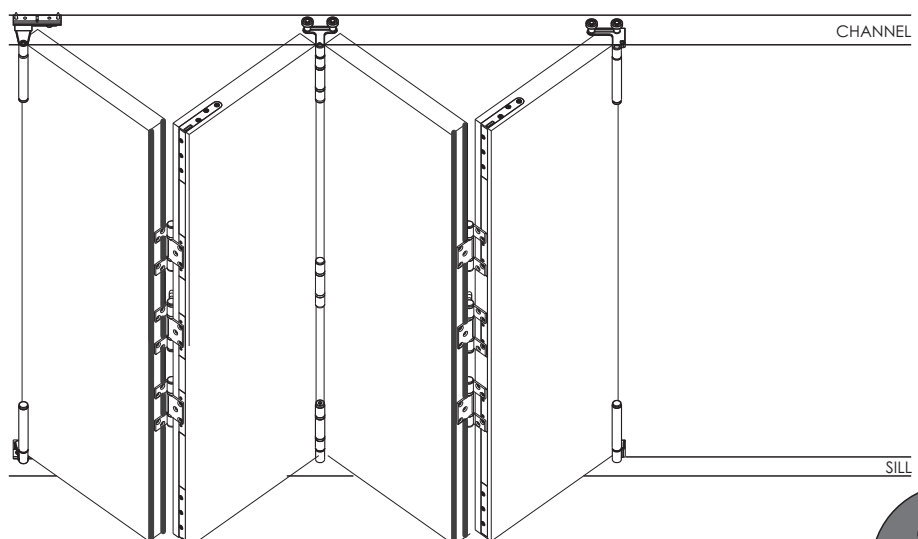
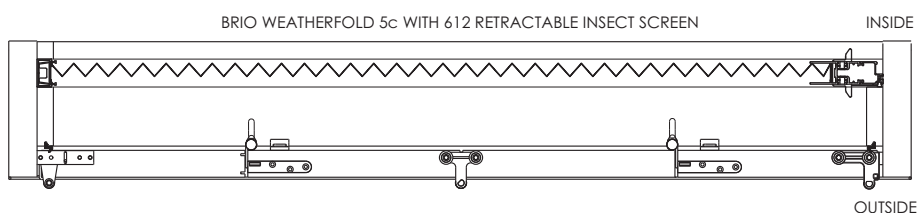
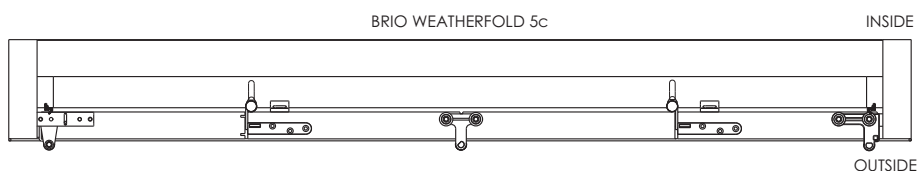
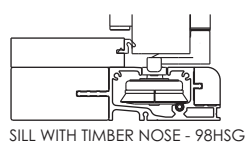
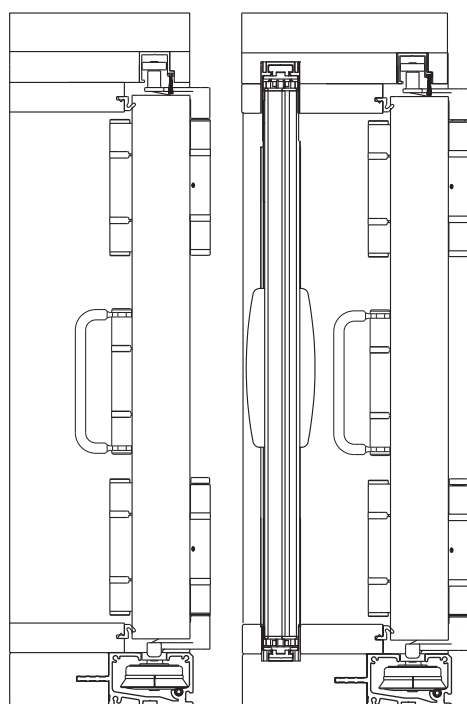


Partially open doors - lock off 1st cap screw



Open fully, lock off 2nd cap screw

System Overview Left hand system shown



Care and Maintenance

Hardware is subject to deterioration from everyday use and from the environment that it is in. In particular, it is important that routine maintenance be carried out in harsh coastal or marine environments and industrial applications.

General

Inspect all fixing bolts for tightness every six months, including those securing brackets. Tighten if necessary. Routinely check for wear and if excessively worn, the part should be replaced.

To help prevent surface corrosion, Brio® recommends washing regularly; even stainless steel finishes in coastal environments may show signs of surface corrosion if not washed regularly. Sheltered areas that are not rain washed are particularly susceptible. Wash with soap or mild detergent and warm water followed by rinsing with clean cold water and wipe dry.

As a guide, if a window or door requires washing then wash the hardware, however Brio® recommend for marine and industrial environments washing a minimum of every 3 months and 6 months for general environments. In coastal or marine environments Brio® recommends applying a light application of corrosion preventative such as CRC Marine 66 or Inox® for Marine, to all surfaces and using a dry cloth to remove excess. When using lubricant or corrosion protection compounds, be careful to avoid the adjacent surfaces and always follow the manufacturer's instructions.

Track

Keep track free from obstruction and excessive dirt or water. Visible surfaces should be cleaned using a damp cloth and mild detergent, then wiped dry.

Where fitting to the outside of the building, it is recommended that the appropriate track is specified.

Rollers & Pivots

All Rollers are fitted with lubricated ball-bearings or plain bearings, requiring no greasing.

Wash as per the above recommendation and apply a light application of corrosion preventative to all surfaces, using a dry cloth to remove excess.

Guides

Guide roller and guide channel must be kept clear and free of obstructions.

Wash as per the above recommendation and apply a light application of corrosion preventative to all surfaces, using a dry cloth to remove excess.

Hinges

Visible surfaces should be cleaned using a damp cloth and mild detergent, then wiped dry. Apply a light application of corrosion preventative to all surfaces, using a dry cloth to remove excess. Repeat at intervals no greater than 3 months.

Dual Point Lock

Visible surfaces should be cleaned using a damp cloth and mild detergent, then wiped dry. Apply a light application of lubricant to internal mechanisms and bolt using a suitable nozzle-spray.